

GOYDER

MASTER PLAN

2022 – 2037 V1

"a strategic management plan" document





The 2012 updated Regional Council of Goyder logo features the iconic Cobb & Co Cottage with four hills, acknowledging the amalgamation of Hallett, Burra Burra, Eudunda & Robertstown. Councils.

ACKNOWLEDGEMENT OF COUNTRY

The Regional Council of Goyder acknowledges the Ngadjuri People, the traditional owners of the land on which our Council is located upon, and pays respects to Elders past, present, and emerging and extends that respect to other Aboriginal or Torres Strait Islander people in the Goyder region.

HOW TO BE INVOLVED

The 'Goyder Master Plan' sets out a vision, objectives, strategies, and actions. It is an evolving document on formal public display at our Burra & Eudunda Council offices.

You can read the document in its entirety on Councils website goyder.sa.gov.au/council/reports

You can make a submission via the website: www.goyder.sa.gov.au/gmp

How else can you engage with Council?



council@goyder.sa.gov.au



goyder.sa.gov.au



facebook.com/regionalcouncilofgoyder



au.linkedin.com/company/regional-council-of-goyder

Please note that all submissions and comments will be treated as public and will be published in a variety of mediums. If you would like to make a submission without it being made public, please contact us directly.

Front cover: Heather Pfitzner – Along the edge of the Tothill Range



CONTENTS

Welcome.....	4
Our Pillars & Objectives	5
Measuring Our Success.....	6
One Goyder	7
Economic Indicators.....	8
Who are we?.....	9
Finance	15
Six Pillars – Delivering & Monitoring the Plan.....	30
1. Engaging with our Community.....	32
2. Strengthening Community	42
3. Economic Resilience.....	53
4. Our Environment & Heritage is Valued & Protected	67
5. Community Assets & Infrastructure	77
6. Leading the Way.....	83
Completed Projects.....	87
Upcoming Projects	88
Advocacy	89

Credit: Amanda Adams–Down the Dirt Road

WELCOME

"The Goyder Master Plan 2022 - 2037 has been developed together with Council, Elected Members, and the Community. It has been an integral part of the plan to get the feedback and the knowledge of our community to drive change and create unity in our region.

We want to see thriving businesses, places, and people – we want to see heritage spaces being activated – sporting facilities to allow our people to be healthy – regional communities aspiring to improve the townships that we live in.

The Goyder Masterplan will guide our actions, it will give the Council opportunities for outside funding, it will allow council to track how they are going meeting the needs of our community and create a culture of working alongside – shoulder to shoulder with industries and business.

We want to thank our community – individuals, community management committees and any other organisation that has contributed to the Goyder Masterplan. Council and the Elected Members are committed to working with you to enhance the beautiful region that we choose to work and live in.

Thank you for your contributions".

From your Council



"A united vibrant community that embraces change and is characterised by strong and responsible leadership".

OUR PILLARS AND OBJECTIVES

ENGAGING WITH THE COMMUNITY

Council and the Community sharing information and working together

STRENGTHENING COMMUNITY

A well-resourced, active and connected community

ECONOMIC RESILIENCE

A strong economy that supports job growth, opportunities for community and business development for a diverse community

OUR ENVIRONMENT & HERITAGE IS VALUED & PROTECTED

Responsible and well-informed management of our natural and built environment and cultural heritage

COMMUNITY ASSETS & INFRASTRUCTURE

A planned and funded infrastructure and Asset Management Program that supports the long-term financial sustainability of Council

LEADING THE WAY

Strong leadership through a cohesive, effective team



MEASURING OUR SUCCESS

ENGAGING WITH THE COMMUNITY

- Data from our community survey
- Number of website and social media hits
- Number of media references to Council and Council activities

STRENGTHENING COMMUNITY

- Number of clubs, memberships and usage rates, level of activity, club viability and external funding obtained
- Number of community-initiated events and activities supported by Council
- Visitation rates for Council facilities (libraries, pools, information centres, accommodation facilities)
- Patronage to the Community Passenger Network

ECONOMIC RESILIENCE

- Number, value, and nature of development and building approvals
- Number of visitor nights in Council owned accommodation
- Number and value of passport sales.
- Number of new businesses & services
- Number of visitors to the Burra & Goyder Visitor Information Centre

OUR ENVIRONMENT & HERITAGE IS VALUED & PROTECTED

- Council CO₂ emissions based on Australian standards against established baseline
- Level of reuse of community wastewater management (CWMS) scheme treated water
- Level of community involvement in environment and Landcare related groups
- Amount of electricity generated from solar infrastructure located in/on community assets

COMMUNITY ASSETS & INFRASTRUCTURE

- Asset condition rating
- Number of kilometres of roads upgraded
- Incidence of flooding/drought in sensitive areas
- Level of external funding obtained for infrastructure projects
- Level of rationalisation or sharing of retained community resources

LEADING THE WAY

- Annual staff turnover (between 2.5% & 5%)
- Number of Elected Members and Staff trained in essential skills and undertaking of professional development
- Staff performance reviews and development processes conducted for both Council and Staff Members
- Data provided in Annual Report that demonstrates level of progress towards outcomes in this plan



ONE GOYDER

COUNCIL WILL

- support the growth and development of our communities through our forward thinking and positive attitudes.
- provide strong leadership to our community, strongly advocating on their behalf to improve access to the services and infrastructure that are required by our community.
- listen to community and respond appropriately through clear and timely communication. Council will be approachable, understanding, and cooperative.
- be transparent and honest in decision making and demonstrate integrity through our efficient and responsible use of resources.

COMMUNITY ENGAGEMENT CHARTER

Our Vision: One Goyder

A united and vibrant community that embraces change is characterised by strong and responsible leadership.

Our community:

Includes people who live, work, participate or contribute to community life as well as access services in the Goyder region.

COMMUNITY ENGAGEMENT COMMITMENT

Council is committed to ensuring that community engagement is integrated into Council activities to support decision making, build relationships and strengthen communities.

Community engagement is the responsibility of all Council service areas, teams, and employees.

Council will advocate for its community and ensure that the community's views, needs, and concerns are raised with other levels of government or relevant stakeholders.

We will undertake evaluation processes to continually improve our approach to community engagement.

A TWO-WAY STREET

How can you engage with Council?

- Visit the council website
- Subscribe to Council's community newsletter
- Participate in local events, activities & community groups
- Attend council meetings
- Speak with your Elected Members
- Provide feedback – in person, via email or via our website

ECONOMIC INDICATORS¹

	2016	2021
POPULATION	4,170	4,060
MEDIAN AGE	59.4	51
ABORIGINAL or TORRES STRAIT ISLANDER	86	106
OVERSEAS BORN	409	778
AGED 0 – 19	894	905
AGED 65 – OVER	1,037	1,103
PERSONS WITH A DISABILITY	1,001	n/a
TOTAL NUMBER OF BUSINESSES	561	n/a
NUMBER OF JOBS	3,268	n/a
UNEMPLOYMENT RATE	6.3%	n/a
AGRICULTURE INDUSTRY EMPLOYMENT	32%	n/a
MEDIAN TOTAL INCOME (per annum)	\$40,778	n/a
LAND AREA (km ²)	6,715.14	6715.14
PROTECTED LAND (km ²)	137.85	137.85
LONE PERSON HOUSEHOLDS	540	572
COUPLES WITH FAMILIES UNDER 15	327	257
TOTAL FAMILIES	1,081	1,078
COMPLETED YEAR 12 OR EQUIVALENT	31.9%	28.8%
INTERNET ACCESSED FROM DWELLING	73.7%	n/a
SMALL SCALE SOLAR INSTALLATIONS	77	n/a
VISITORS TO THE REGION	17,975	
HERITAGE PASSPORT SALES VALUE	\$209,963	

¹ www.abs.gov.au

WHO ARE WE?

ECONOMIC DEVELOPMENT

Council is responsible for the delivery of economic development in its role as coordinator and facilitator. This reflects the important role Council plays in connecting with community and local business with links to other agencies, service providers and tiers of government. While population growth, business and industry drive economic development, Council influences the services, infrastructure and support required to facilitate economic activity.

Some of the key areas of Economic development for our region are

- Agriculture – Grain, Hay and Livestock,
- Natural and Built Heritage Tourism
- Wind and Solar Power

AGRICULTURE

The Goyder Region embraces diverse landscapes with rich agricultural land for farming and pastoralism. The region is home to strategic transport routes and a strong manufacturing base associated with agriculture.

Producers are becoming more efficient with the use of modern machinery and technologies, which has seen a reduction of labour hire. This has an impact on rural communities such as Goyder as less people are employed. We have seen some intensive industries increase in our Region with cattle feedlots, chicken sheds, piggeries, hay production etc. which has provided an important source of economic development to our community.

DEVELOPMENT

The Planning and Design Code is the cornerstone of South Australia's new planning system and is the single source of planning policy for assessing development applications across the state. The Code replaces all South Australian Development Plans.

It is important to note that not all developments in Goyder are assessed by Council. The State Commission Assessment Panel independently assesses and determines specified kinds of development applications in Australia. These include developments of significant regional impact, e.g., Wind Farms. Council and community are welcome to make submissions; however, the decision for these developments ultimately lies with the state.

Council has joined with the Clare & Gilbert Valleys Council, Northern Areas Council and Wakefield Regional Council to form the Mid North Regional Assessment Panel (RAP).

TOURISM

Council aims to grow visitation in Goyder and any other region that may benefit, by developing a quality visitor experience, promoting the destination, and continually improving as an industry, both individually and collaboratively.

Our strategy articulates actions we will take to stimulate tourism in the region, as well as guide our actions in collaboration with the tourism industry. Council is committed to tourism in Goyder and will implement the initiatives identified.

ARTS & CULTURE

Council recognises the role of arts and culture in community wellbeing.

The Arts & Development Strategy 2018 – 2023 supports:

- public arts initiatives across the region;
- activating public areas to increase the use of public areas across the region through programs and activities that draw people to parks, recreational areas and shopping precincts;
- increase the capacity of the Burra Regional Art Gallery's to provide arts and cultural services and support across the region;
- to value and encourage the development of creative businesses and social enterprise; and
- to initiate events for Goyder focusing on our relationship with the Clare Valley Wine Region, our reputation as a 'food bowl' for the region, our arts and culture and activating our heritage spaces.

GOYDER'S LINE

The Regional Council of Goyder was named in honour of George Woodroffe Goyder, who's famous "Goyder's Line" traverses the Council region.

In 1865, following some years of drought, Goyder was sent north to determine the line of demarcation between where rainfall had extended and where the drought conditions prevailed. The "Goyder's line of rainfall" was established which followed the southern boundary of the vast saltbush areas of the north.

Goyder's line runs from a little north of Pinnaroo in a curve past Eudunda and Burra to Terowie, then between Yongala and Peterborough, then north-west to Mount Remarkable and south to Moonta. Goyder's Line provides a very accurate guide to the separation point between lands suitable for all sorts of agriculture on a long-term sustainable basis and lands suitable only for grazing.



THE BURRA CHARTER

The Burra Charter is a set of principles that have been adopted to create a nationally accepted standard for heritage conservation practice in Australia.

The Australia ICOMOS Charter for the Conservation of Places of Cultural Significance, known as the 'Burra Charter', was first adopted at Burra in 1979.

The Burra Charter defines the basic principles and procedures to be followed in the conservation of heritage places. These principles and procedures can be applied to a monument, building, garden, shell midden, rock art site, road, mining, or archaeological site, or to a whole region.

The Burra Charter advocates a cautious approach to changing a place. Only the work necessary to repair and secure and to make it function is recommended so the history of the place can continue to be recognised.

HISTORY & HERITAGE

The Regional Council of Goyder was created in 1997, when four municipalities in the region were amalgamated: the District Council of Burra Burra, the District Council of Eudunda, the District Council of Hallett and the District Council of Robertstown. Mining features prominently in the region's history, particularly the mining of copper.

Goyder is named after former Surveyor General George Goyder who mapped Goyder's Line (of rainfall) in 1865. This map is still of great relevance to local cereal cropping as the line dissects the council area. It is also of great cultural importance to whole upper Mid North region of South Australia, with the 150th anniversary of Goyder's Line being celebrated in Orroroo, just north of the Goyder council area, in November 2015.

NGADJURI

Ngadjuri Country is a rich and diverse region - from wine country to mountain ranges and the outback. Ngadjuri land extends from Angaston and Gawler in the south to Panaramittee and Yunta in the north and includes the Mid North, Clare Valley, Barossa, Burra, Peterborough, Orroroo, Apilla, Booleroo Centre, Jamestown, Willochra Plain, Bimbowrie, Mt Bryan and the Southern Flinders Ranges. The Ngadjuri closely interacted with their neighbours.



Norman Tindale (1974) from the South Australian Museum, drew up a map showing boundaries of the regions associated with Aboriginal language groups. As with all groups of humans worldwide, there have been and still are disputed land boundaries.

Thousands of the oldest communications on earth, much older than any other ancient language known to man, including Egyptian hieroglyphs, can be found engraved on rocks across Ngadjuri Country.

DROUGHT

The Goyder region is renowned for its cereal crops, wool, sheep, cattle and other livestock production and well-preserved mining and pastoral heritage, yet drought is challenging all communities on both sides of the line in the same way that impacts are being felt across the State, and Australia. Our towns rely heavily on surrounding farming for their economic survival.

Council continues to work in advocating for and supporting the region as a response to drought through its representation on the Eastern Districts Drought Group committee and ongoing partnership work with the community and businesses as well as state and federal agencies.

COVID-19

Council's greatest concern is the health and safety of our community, especially those most at risk. Council encouraged people not to lose their community spirit but to stay in touch with each other while observing the sanctioned health advice, which is updated regularly for everyone's safety. Everyone was urged to take responsible steps to minimise the spread of the virus, while continuing to support where possible, local businesses and communities.

Community was guided to the South Australian Local Government for daily updates as the latest medical advice was updated regularly by the Commonwealth Department of Health. Community was encouraged to use this resource to remain aware of developments and official reports.

RENEWABLE ENERGY

Goyder is a significant renewable energy resource which to date, is yet to be fully developed. Clean energy investments create jobs in regional Australia, where the best renewable energy resources are located.

Based on estimates close to 5,000 new jobs will be created in South Australia's electricity sector by 2030, most of these jobs will be in renewable energy. Strong government policies to cut pollution and make clean energy cheaper has the potential to drive significant renewable energy investments in South Australia over the coming decade.

CONSERVATION MANAGEMENT PLAN

This Conservation Management Plan (CMP) was commissioned by the Council and addresses the Australian Cornish Mining Sites: Burra located in the Mid North region of South Australia. The Cornish Mining Sites at Burra is inscribed on the Australian National Heritage List as a place of outstanding national heritage significance where Cornish mining technology, skills and culture is demonstrated to a high degree.

The CMP is intended as a document which helps owners, managers and authorities understand the national heritage values of Burra. It specifies how those values can be best conserved over time with change. It is intended to be used as a tool by Council and State and Commonwealth Government agencies to inform future development and decision making and management strategies for Burra.

ENVIRONMENT

Landscapes underpin our communities, our economy, our wellbeing, and our way of life, which is why Council has a responsibility to protect and manage the landscapes within our region for the enjoyment of all South Australians.

In July 2020, the *Landscape South Australia Act 2019* replaced the *Natural Resources Management Act 2004*, as the key framework for managing the state's land, water, pest plants and animals, and biodiversity across the state.

A key priority of landscape boards is to support local communities and landowners to be directly responsible for sustainably managing their region's landscapes with an emphasis on land and water management, pest animal and plant control, and biodiversity. This includes providing greater funding and partnership opportunities with local community organisations to deliver on ground works and projects.

Council continues works in collaboration with the Mid North Landscape Board to ensure the priorities of Goyder are met.

A LIVING PLAN

The Goyder Master Plan sets the directions for Council and our community for the next fifteen years. Council will report annually on the actions and the extent to which these have contributed to the outcomes established in this Plan.

Council will work together with residents and businesses to build strong, cohesive and prosperous communities; supported by the sustainable management of the natural and built environment, infrastructure and assets, and human resources.



THE PLAN

In accordance with *The Local Government Act 1999* Section 122(1) a Council must develop and adopt plans (which may take various forms) for the management of its area, to be called collectively the ***strategic management plans*** which identify the council's objectives for the area over a period of at least 4 years, provide relevant assessments and identify the principal activities that council intends to undertake to achieve its objectives.

Strategic management plans should address issues, set out priorities, be consistent with relevant statutory authority and must have regard to council's roles and responsibilities under this Act or any other Act.

The Goyder Master Plan is structured over a fifteen (15) year time frame aimed at delivering change while adapting to a tightening financial environment.

STATE-WIDE CONTEXT

All Council's in South Australia are required by the Local Government Act 1999 to apply a strategic planning approach to all activity. The Goyder Master Plan 2021 – 2036 is one of Council's lead strategic documents and replaces the Goyder Master Plan 2020 – 2035 document.

Burra is a National Heritage Area and therefore Council is required to have regard for State Heritage Plans, policies and the Burra Charter. Council must also consider the Australian Cornish Mining Sites: Burra Conservation Management Plan 2019 as an important tool to guide development and the preservation of heritage.

REGIONAL CONTEXT

The Regional Council of Goyder is part of the Yorke and Mid North Regional Development Australia Board. The 2018 – 2028 Regional Roadmap contribute to setting the context of economic development in Goyder. The Goyder Council area is covered by Northern and Yorke Landscape Management Region (LMR).

LOCAL CONTEXT

Council prepares a number of plans and strategies some of these are:

- A Long Term Capital Management Program
- An Asset Management Plan
- A Goyder Tourism Strategic Plan
- Annual Business Plan

CHIEF EXECUTIVE OFFICER SUSTAINABILITY REPORT

The Regional Council of Goyder (Council) continues to take a conservative approach to its long-term planning to ensure the future financial sustainability of Council.

I have reviewed the 2022/23 Annual Business Plan and Budget and the 2022/32 Long Term Financial Plan, the associated supporting plans, including the underlying assumptions in the plans. I conclude that my review indicates that Council is sustainable over the course of the plan, subject to any unknown material issues arising affecting the plans that are beyond the capacity of Council to foresee.

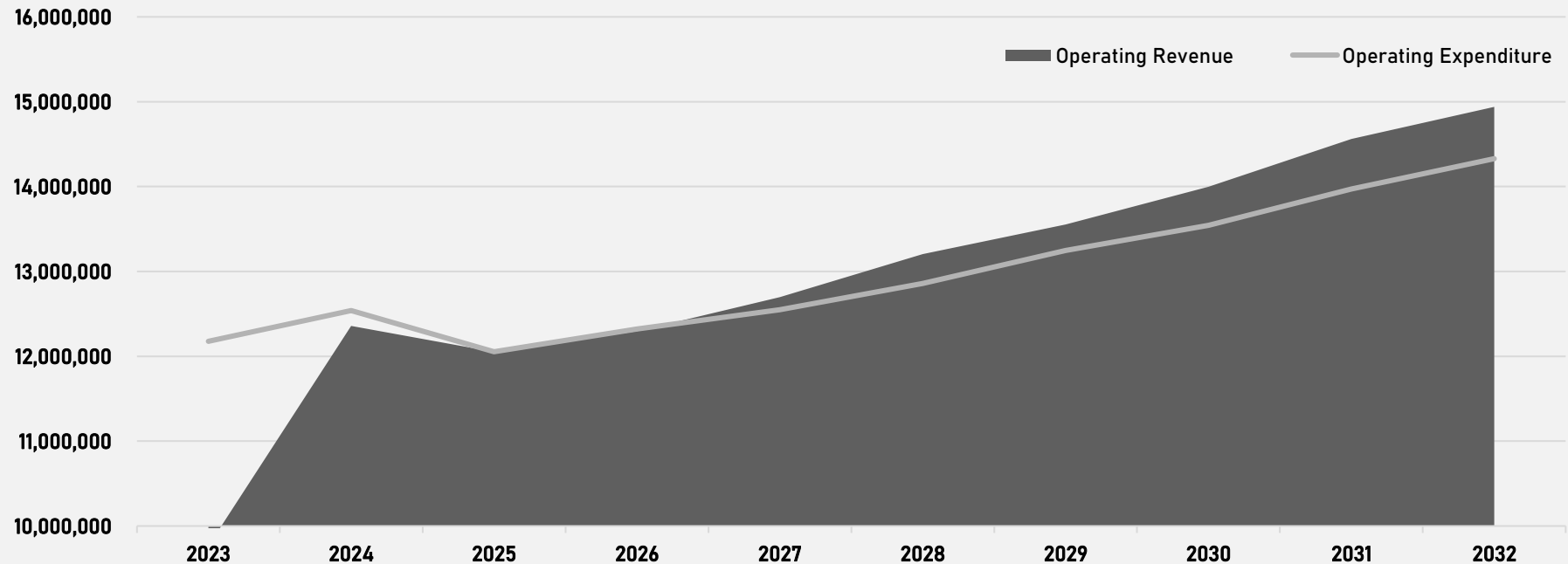
Council has an appropriate rating framework, this along with other revenue sources provides sufficient income to meet the goals in its plans. The long-term financial sustainability of Council is a critical element considered in the underlying assumptions which include the ability to meet all its ongoing operating costs, infrastructure replacement and repairs.

The forward cashflow projections and cash reserves are adequate for the sustainable operation of Council. Council anticipates a low debt level for the period projected, which does allow for the utilisation of debt funding in the future should it be deemed necessary.

The current inflationary environment is a future factor that may have a deleterious impact on the long-term financial sustainability of Council. To this end, it is essential that adequate measures are implemented during any future reviews so that the sustainability of Council is not jeopardised.

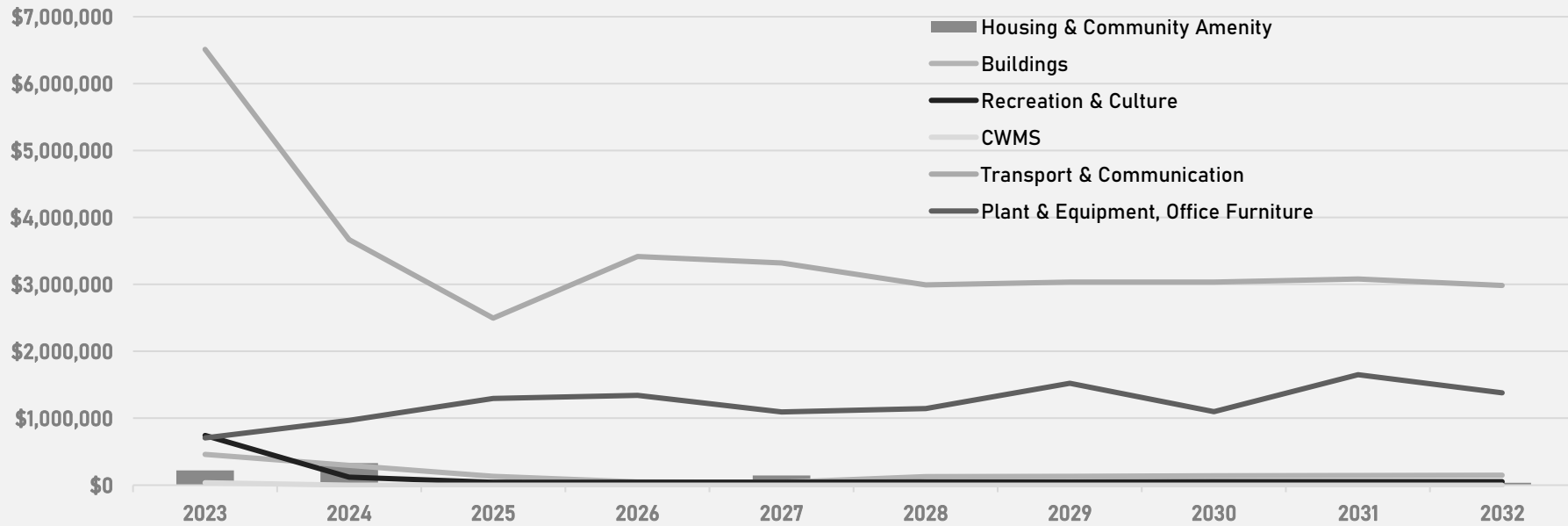
COMPREHENSIVE INCOME 2023-2032

	2023	2024	2025	2026	2027	2028	2029	2030	2031	2032
Operating Revenue	9,765,415	12,358,415	12,052,545	12,295,399	12,696,512	13,202,834	13,553,519	13,998,790	14,562,775	14,939,424
Operating Expenditure	12,177,334	12,538,544	12,053,807	12,323,069	12,548,539	12,858,271	13,247,592	13,542,926	13,970,812	14,328,848
OPERATING SURPLUS/(DEFICIT)	(2,411,919)	(180,129)	(1,262)	(27,670)	147,973	344,563	305,927	455,864	591,963	610,576
Capital Revenue	1,909,468	795,269	-	-	-	89,076	-	-	98,761	89,632
NET SURPLUS/(DEFICIT) Operations	(502,451)	615,140	(1,262)	(27,670)	147,973	433,639	305,927	455,864	690,724	700,208



CAPITAL EXPENDITURE 2023-2032

	2023	2024	2025	2026	2027	2028	2029	2030	2031	2032
Buildings	460,000	294,975	133,903	49,892	42,458	129,692	134,231	138,929	143,792	148,825
Housing & Community Amenity	221,000	331,200	80,342	27,718	143,440	29,692	30,731	31,807	32,920	34,072
Recreation & Culture	743,260	119,025	42,849	44,349	45,901	47,507	49,170	50,891	52,672	54,516
CWMS	36,000	-	-	-	-	-	-	-	-	-
Transport & Communication	6,511,680	3,669,573	2,496,197	3,414,905	3,322,135	2,993,027	3,036,320	3,034,448	3,081,397	2,984,811
Plant & Equipment, Office Furniture	706,500	968,760	1,294,040	1,343,567	1,093,589	1,146,117	1,524,545	1,097,977	1,650,608	1,380,615
TOTAL	8,678,440	5,383,533	4,047,331	4,880,431	4,647,524	4,346,036	4,774,998	4,354,052	4,961,390	4,602,839





2023 – 2032 ASSET MANAGEMENT PLAN – BUILDINGS

DESCRIPTION	TOWN	ACTION / RESPONSIBILITY	2023	2024	2025	2026	2027	2028	2029	2030	2031	2032	Total
Cemetery	Booborowie	New Niche Wall	20,000	-	-	-	-	-	-	-	-	-	20,000
Waste Transfer Station	Booborowie	Construction	-	36,225	-	-	-	-	-	-	-	-	36,225
Activities Centre	Burra	External & internal painting	13,000	-	-	-	-	-	-	-	-	-	13,000
Activities Centre	Burra	Drainage	-	10,350	-	-	-	-	-	-	-	-	10,350
Art Gallery	Burra	Asbestos removal	-	18,630	-	-	-	-	-	-	-	-	18,630
Art Gallery - Toilets	Burra	Asbestos removal	-	15,525	-	-	-	-	-	-	-	-	15,525
Burra Caravan Park	Burra	Capital upgrades	25,000	25,875	26,781	27,718	28,688	29,692	30,731	31,807	32,920	34,072	293,285
Burra Creek	Burra	Power Supply for Xmas lights	3,000	-	-	-	-	-	-	-	-	-	3,000
Cemetery	Burra	Wall repairs	25,000	-	-	-	-	-	-	-	-	-	25,000
Cemetery	Burra	Wall repairs	-	10,000	10,350	10,712	11,087	11,475	11,877	12,293	12,723	13,168	103,685
Cemetery	Burra	Replace water supply pipe	5,000	-	-	-	-	-	-	-	-	-	5,000
Council Office	Burra	A/C replacement server room	2,500	-	-	-	-	-	-	-	-	-	2,500
Jubilee Fountain	Burra	Restoration	20,000	-	-	-	-	-	-	-	-	-	20,000
MFS Shed	Burra	Asbestos removal	-	-	-	-	13,770	-	-	-	-	-	13,770
MFS Shed	Burra	Roof repair/replacement	-	-	-	-	13,770	-	-	-	-	-	13,770
Commercial St	Burra	Reconstruct garden beds	-	-	-	-	114,752	-	-	-	-	-	114,752
Mine Site	Burra	Engineering assessment/Specification works Morphett's and Hectors Shaft	-	-	53,561	-	-	-	-	-	-	-	53,561
Mine Site	Burra	Morphett Shaft Reconstruction	-	-	-	-	-	-	-	-	-	-	-
Mine Site	Burra	Hector Shaft Reconstruction	-	-	-	-	-	-	-	-	-	-	-
Passport Product Sites	Burra	Refurbishment	40,000	41,400	42,849	44,349	45,901	47,507	49,170	50,891	52,672	54,516	469,256
Paxton Square Cottages	Burra	Capital upgrades	125,000	25,875	26,781	27,718	28,688	29,692	30,731	31,807	32,920	34,072	929,531
Pool - Admin Building	Burra	Internal/External painting	20,000	-	-	-	-	-	-	-	-	-	20,000
Pool - Amenities Block	Burra	Internal painting	-	15,525	-	-	-	-	-	-	-	-	15,525
Pool - Amenities Block	Burra	External painting	-	-	-	16,631	-	-	-	-	-	-	16,631
Public Toilets	Burra	Replacement	-	258,750	-	-	-	-	-	-	-	-	258,750
Sports Complex	Burra	Asbestos removal	-	-	-	16,631	-	-	-	-	-	-	16,631
Tennis Courts	Burra	New Building	20,000	-	-	-	-	-	-	-	-	-	20,000
Town Hall	Burra	Re furbish floor	-	-	53,561	-	-	-	-	-	-	-	53,561
Town Hall	Burra	Rear wall repairs	2,000	-	-	-	-	-	-	-	-	-	2,000
Town Hall	Burra	Repainting front wall stonework	4,000	-	-	-	-	-	-	-	-	-	4,000
Town Hall - Front foyer	Burra	Salt damp repairs	-	10,350	-	-	-	-	-	-	-	-	10,350
Town Hall - History Room	Burra	Asbestos removal	-	-	10,712	-	-	-	-	-	-	-	10,712
Unicorn Brewery	Burra	Barge/Fascia painting	-	-	10,712	-	-	-	-	-	-	-	10,712
Visitors Centre	Burra	U/grade incl front verandah replacement	100,000	-	-	-	-	-	-	-	-	-	100,000
Waste Transfer Station	Burra	Oil Drop shelter	3,000	-	-	-	-	-	-	-	-	-	3,000
Waste Transfer Station	Burra	E Waste shelter	5,000	-	-	-	-	-	-	-	-	-	5,000

Carpark	Eudunda	Re seal behind new building	40,000	-	-	-	-	-	-	-	-	-	40,000
Community Centre	Eudunda	External Painting	-	20,700	-	-	-	-	-	-	-	-	20,700
Show Hall	Eudunda	Re Roof	30,000	-	-	-	-	-	-	-	-	-	30,000
Community Hub	Eudunda	New admin building	20,000	-	-	-	-	-	-	-	-	-	20,000
Council Office	Eudunda	A/C replacement	-	3,105	-	-	-	-	-	-	-	-	3,105
Health Clinic	Eudunda	Asbestos removal/flooring review	-	-	8,570	-	-	-	-	-	-	-	8,570
Heritage Gallery	Eudunda	New roofing & structure	120,000	-	-	-	-	-	-	-	-	-	120,000
Memorial Gardens	Eudunda	New septic tank	15,000	-	-	-	-	-	-	-	-	-	15,000
Nicholson Reserve	Eudunda	New Playground	-	67,275	-	-	-	-	-	-	-	-	67,275
Nicholson Reserve	Eudunda	Shade Sail	-	10,350	-	-	-	-	-	-	-	-	10,350
Rail Trail	Eudunda	Walking/Cycling Trail	100,000	-	-	-	-	-	-	-	-	-	100,000
Skate Park	Eudunda	Construction - c/fwd from 2021/22 - \$100k LRCI funded	523,260	-	-	-	-	-	-	-	-	-	523,260
Pool	Eudunda	Repairs to Pool Tank and bund	10,000	-	-	-	-	-	-	-	-	-	10,000
Cemetery	Farrell Flat	New Niche Wall	20,000	-	-	-	-	-	-	-	-	-	20,000
Waste Transfer Station	Farrell Flat	Construction	-	41,400	-	-	-	-	-	-	-	-	41,400
Former CEO Residence	Hallett	Asbestos removal	-	-	5,356	-	-	-	-	-	-	-	5,356
Institute Hall	Hallett	Replace guttering	15,000	-	-	-	-	-	-	-	-	-	15,000
Institute Hall	Hallett	Replace water tank	5,000	-	-	-	-	-	-	-	-	-	5,000
Institute Hall	Hallett	Memorial Gardens refurbishment	30,000	-	-	-	-	-	-	-	-	-	30,000
Institute Hall	Hallett	Replace water pipe - Hall to Oval	15,000	-	-	-	-	-	-	-	-	-	15,000
Institute Hall	Hallett	Asbestos Removal	20,000	-	-	-	-	-	-	-	-	-	20,000
Pool	Hallett	Reconstruction	-	-	-	-	-	-	-	-	-	-	-
Public Toilets	Hallett	Refurbishment/Disabled access	40,000	-	-	-	-	-	-	-	-	-	40,000
Waste Transfer Station	Hallett	Construct hardstand area for green waste	10,000	-	-	-	-	-	-	-	-	-	10,000
Public Toilets	Mt Bryan	Disabled access	-	10,350	-	-	-	-	-	-	-	-	10,350
Council Depot	Robertstown	Concrete Floor Replacement	-	-	-	22,174	-	-	-	-	-	-	22,174
Inspiration point	Robertstown	New shelter	30,000	-	-	-	-	-	-	-	-	-	30,000
Oval	Robertstown	Irrigation tank & bore upgrades	55,000	-	-	-	-	-	-	-	-	-	55,000
Storage Tank	Robertstown	Improve water supply/meter to 2"	-	20,700	-	-	-	-	-	-	-	-	20,700
Telecentre	Robertstown	Asbestos removal	10,000	-	-	-	-	-	-	-	-	-	10,000
Telecentre	Robertstown	Kitchen Upgrade	20,000	-	-	-	-	-	-	-	-	-	20,000
Town Hall	Terowie	Re Roof	-	-	53,561	-	-	-	-	-	-	-	53,561
Town Hall	Terowie	Asbestos removal	-	-	21,425	-	-	-	-	-	-	-	21,425
Tree Management	Farrell Flat	Duncan Park & Street trees	20,000	-	-	-	-	-	-	-	-	-	20,000
Tree Management	Hampden	Hampden Rd & Street trees	-	20,700	-	-	-	-	-	-	-	-	20,700
Tree Management	Hanson	Reserve	15,000	-	-	-	-	-	-	-	-	-	15,000
Tree Management	Burra	Southern township entrance	-	41,400	-	-	-	-	-	-	-	-	41,400

Tree Management	Burra	Creek - Southern End	15,000	-	-	-	-	-	-	-	-	-	15,000
Tree Management	Burra	Mine site Aleppo Pine Removal	-	-	32,137	-	-	-	-	-	-	-	32,137
Tree Management	Robertstown	Oval	-	10,350	-	-	-	-	-	-	-	-	10,350
Waste Management Strategy	Council Wide	Stage 1 : Development	15,000	-	-	-	-	-	-	-	-	-	15,000
Waste Management Strategy	Council Wide	Stage 2 : Implementation	-	207,000	-	-	-	-	-	-	-	-	207,000
		TOTAL	1,625,760	921,835	356,356	165,933	256,657	218,367	226,010	233,920	242,107	250,581	4,497,526



2023 – 2032 ASSET MANAGEMENT PLAN – TRANSPORT

	LOCATION	TOWN	ACTION / RESPONSIBILITY	2023	2024	2025	2026	2027	2028	2029	2030	2031	2032	TOTAL
Pavement	Booborowie Rd	Booborowie	RTR Project	1,168,338	685,169	-	-	-	-	-	-	-	-	1,853,507
	Hills Rd	Burra - Rural	Road Construction - SLR 2/3 funded	300,000	-	-	-	-	-	-	-	-	-	300,000
Sealed Roads	North Tce, Richard St, Jessie St and John St	Hallett	Construction Sealed Road	250,000	-	-	-	-	-	-	-	-	-	250,000
	Railway Tce	Point Pass	Construction Sealed Road	-	-	-	-	137,703	-	-	-	-	-	137,703
	Morehead Street	Burra	Shoulders Best Place to Butterworth	50,000	-	-	-	-	-	-	-	-	-	50,000
	Lelante St	Burra	Construction Sealed Road	-	-	64,274	-	-	-	-	-	-	-	64,274
	Programmed	Council Wide	Re Seals	663,472	-	-	-	-	-	-	-	-	-	663,472
	Asset Management Plan	Council Wide	Re seals / drainage / footpaths / kerbing & water table	-	-	-	-	-	-	-	-	-	-	-
	South Tce Silos to Ward St	Eudunda	Road Re-Construction	-	-	-	332,615	-	-	-	-	-	-	332,615
Drainage	South Tce	Booborowie	Detention Dam near School - Construct	-	-	-	-	-	-	61,463	-	-	-	61,463
	Booborowie	Booborowie	Stormwater Management Plan (50% funded)	-	-	-	-	-	178,153	-	-	-	-	178,153
	Terowie	Terowie	Stormwater Management Plan (50% funded)	-	-	-	-	-	-	-	-	197,521	-	197,521
	Eudunda	Eudunda	Stormwater Management Plan (50% funded)	150,000	-	-	-	-	-	-	-	-	-	150,000
	Bruce St	Eudunda	Install new Drain E	100,000	-	-	-	-	-	-	-	-	-	100,000
	Golf Course	Eudunda	Replace Drain A culvert	20,000	-	-	-	-	-	-	-	-	-	20,000
	Ayers St	Burra	Construction (part c/fwd from 20/21)	150,000	-	-	-	-	-	-	-	-	-	150,000
	Burra	Burra	Stormwater Management Plan	-	207,000	-	-	-	-	-	-	-	-	207,000
	St Just St	Burra	Stormwater Management Plan	120,000	-	-	-	-	-	-	-	-	-	120,000
Floodways	Black Springs Rd	Rural - Robertstown	Reconstruct floodway	80,000	-	-	-	-	-	-	-	-	-	80,000
	Foot Rd/Neales Rd	Rural - Eudunda	Intersection Drainage	20,000	-	-	-	-	-	-	-	-	-	20,000
	Belalie Rd	Rural - Hallett	Construct Floodway	-	67,275	-	-	-	-	-	-	-	-	67,275
	Booborowie Rd	Rural - Hallett	Construct Floodway	-	67,275	-	-	-	-	-	-	-	-	67,275
	Booborowie Rd	Rural - Hallett	Construct Floodway	-	67,275	-	-	-	-	-	-	-	-	67,275

	Australia Plains Rd	Rural - Eudunda	Reconstruct Floodway	-	-	-	88,697	-	-	-	-	-	-	88,697
	Border Rd	Rural - Eudunda	Construct Floodway	-	-	69,630	-	-	-	-	-	-	-	69,630
	Caroona Rd	Rural - Burra	Construct Floodway	-	-	-	-	103,277	-	-	-	-	-	103,277
	Caroona Rd	Rural - Burra	Construct Floodway	-	-	-	-	91,802	-	-	-	-	-	91,802
	Caroona Rd	Rural - Burra	Construct Floodway	-	-	-	-	91,802	-	-	-	-	-	91,802
	Caroona Rd	Rural - Burra	Construct Floodway	-	-	-	-	-	77,200	-	-	-	-	77,200
	Caroona Rd	Rural - Burra	Construct Floodway	-	-	-	-	-	77,200	-	-	-	-	77,200
	Eagle Rd	Rural - Eudunda	Construct Floodway	-	-	16,068	-	-	-	-	-	-	-	16,068
	Ketchowla Rd	Rural - Hallett	Construct Floodway	-	-	-	-	-	-	110,633	-	-	-	110,633
	Ketchowla Rd	Rural - Hallett	Construct Floodway	-	-	-	-	-	-	92,194	-	-	-	92,194
	Ketchowla Rd	Rural - Hallett	Construct Floodway	-	-	-	-	-	-	79,902	-	-	-	79,902
	Ketchowla Rd	Rural - Hallett	Construct Floodway	-	-	-	-	-	-	-	82,698	-	-	82,698
	Ketchowla Rd	Rural - Hallett	Construct Floodway	-	-	-	-	-	-	-	82,698	-	-	82,698
	Ketchowla Rd	Rural - Hallett	Construct Floodway	-	-	-	-	-	-	-	82,698	-	-	82,698
	May Rd	Rural - Eudunda	Additional headwall works	-	-	10,712	-	-	-	-	-	-	-	10,712
	Mallett Rd	Rural - Hallett	Construct Floodway	-	-	-	72,067	-	-	-	-	-	-	72,067
	Mallett Rd	Rural - Hallett	Construct Floodway	-	-	-	72,067	-	-	-	-	-	-	72,067
	Mallett Rd	Rural - Hallett	Construct Floodway	-	-	-	72,067	-	-	-	-	-	-	72,067
	Plains Rd	Rural - Robertstown	Construct Headwall	-	-	10,712	-	-	-	-	-	-	-	10,712
	Plains Rd	Rural - Robertstown	Construct Headwall	-	-	10,712	-	-	-	-	-	-	-	10,712
Footpath - New	Stock St	Burra	New footpath	-	51,750	-	-	-	-	-	-	-	-	51,750
	St Just St	Burra	New footpath	-	-	53,561	-	-	-	-	-	-	-	53,561
	Market St Footbridge	Burra	Disable Access	-	-	-	88,697	-	-	-	-	-	-	88,697
	Market St	Burra	New Footpath/Kerbing/Caravan Parking	75,000	-	-	-	-	-	-	-	-	-	75,000
	Bruce St	Eudunda	Handrails	-	-	-	-	-	-	-	-	-	-	-
Footpath - Renewal	Bath St (RH) - Kangaroo to Queen	Burra	Resurface	-	5,175	-	-	-	-	-	-	-	-	5,175
	Bridge St (RH) - Bridge to Kingston	Burra	Resurface	-	5,175	-	-	-	-	-	-	-	-	5,175
	Bridge St East (LH) - Bridge to Ayres	Burra	Resurface	-	5,175	-	-	-	-	-	-	-	-	5,175

Bridge St East (RH) - Bridge to Ayres	Burra	Resurface	-	5,175	-	-	-	-	-	-	-	-	5,175
Bridge St West (LH) - Chapel to Upper Thames	Burra	Resurface	-	5,175	-	-	-	-	-	-	-	-	5,175
Bridge St West (RH) - Chapel to Upper Thames	Burra	Resurface	-	5,175	-	-	-	-	-	-	-	-	5,175
Commercial St (LH) - Queen to Chapel	Burra	Resurface	-	155,250	-	-	-	-	-	-	-	-	155,250
Church St (LH) - Ware to Kangaroo	Burra	Resurface	-	5,175	-	-	-	-	-	-	-	-	5,175
Kangaroo St (RH) - Bath to Stock	Burra	Resurface	-	5,175	-	-	-	-	-	-	-	-	5,175
Kangaroo St (RH) - Stock to Allen	Burra	Resurface	-	5,175	-	-	-	-	-	-	-	-	5,175
Kingston St (RH) - East to Pleasant	Burra	Resurface	-	-	5,356	-	-	-	-	-	-	-	5,356
Lower Thames St (LH) - Stock to Allen	Burra	Resurface	-	-	5,356	-	-	-	-	-	-	-	5,356
Morehead St (LH) - West to Mill	Burra	Resurface	-	-	5,356	-	-	-	-	-	-	-	5,356
Mt Pleasant LH - Market to 40m	Burra	Repave	30,000	-	-	-	-	-	-	-	-	-	30,000
Paradise St (LH) - Kingston to Quarry	Burra	Resurface	-	-	5,356	-	-	-	-	-	-	-	5,356
Upper Thames St (RH) - Church to Bath	Burra	Resurface	-	-	5,356	-	-	-	-	-	-	-	5,356
Main St	Terowie	Slate General Store	10,000	-	-	-	-	-	-	-	-	-	10,000
East Tce (LH) - Second to Third	Booborowie	Resurface	5,000	-	-	-	-	-	-	-	-	-	5,000
East Tce (LH) - Third to South Tce	Booborowie	Resurface	5,000	-	-	-	-	-	-	-	-	-	5,000
Fifth St (RH) - First to Second	Booborowie	Resurface	5,000	-	-	-	-	-	-	-	-	-	5,000
Fifth St (LH) - Second to Third	Booborowie	Resurface	5,000	-	-	-	-	-	-	-	-	-	5,000
Fifth St (RH) - Second to Third	Booborowie	Resurface	5,000	-	-	-	-	-	-	-	-	-	5,000
Sixth St (LH) - North Tce to First	Booborowie	Resurface	5,000	-	-	-	-	-	-	-	-	-	5,000
Sixth St (RH) - North Tce to First	Booborowie	Resurface	5,000	-	-	-	-	-	-	-	-	-	5,000
Sixth St (LH) - First to Second	Booborowie	Resurface	5,000	-	-	-	-	-	-	-	-	-	5,000
Sixth St (RH) - First to Second	Booborowie	Resurface	5,000	-	-	-	-	-	-	-	-	-	5,000
Sixth St (LH) - Second to Third	Booborowie	Resurface	5,000	-	-	-	-	-	-	-	-	-	5,000
Sixth St (RH) - Second to Third	Booborowie	Resurface	5,000	-	-	-	-	-	-	-	-	-	5,000
Third St (RH) - Fourth to Fifth	Booborowie	Resurface	5,000	-	-	-	-	-	-	-	-	-	5,000
Third St (LH) - Fourth to Fifth	Booborowie	Resurface	5,000	-	-	-	-	-	-	-	-	-	5,000

	Third St (RH) - Fifth to Sixth	Booborowie	Resurface	5,000	-	-	-	-	-	-	-	-	5,000
	Third St (LH) - Fifth to Sixth	Booborowie	Resurface	5,000	-	-	-	-	-	-	-	-	5,000
Kerbing & Water Table - New	Allen St - Thames to the Creek	Burra	Footpath and Kerb	50,000	-	-	-	-	-	-	-	-	50,000
	Allen St - Queen to Chapel	Burra	Kerbing & Shoulders	80,000	-	-	-	-	-	-	-	-	80,000
	Butterworth Street	Burra	Kerbing & Shoulders	25,000	-	-	-	-	-	-	-	-	25,000
	Gall St - Hill St south	Burra	Kerbing & Shoulders	-	-	-	-	91,802	-	-	-	-	91,802
	Lower Thames St - Allen St to End	Burra	Kerbing & Shoulders	80,000	-	-	-	-	-	-	-	-	80,000
	Market St - Mine Entrance to Helen	Burra	Kerbing & Shoulders	-	-	-	166,308	-	-	-	-	-	166,308
	Mt Pleasant St Rear of Hall	Burra	Kerbing & Shoulders	-	-	160,684	-	-	-	-	-	-	160,684
	Packard Street	Burra	Kerbing & Shoulders	25,000	-	-	-	-	-	-	-	-	25,000
	Park St - West to Cooper	Burra	Kerbing & Shoulders	50,000	-	-	-	-	-	-	-	-	50,000
	Sancreed St - Ludgvan to Truro	Burra	Kerbing/Footpath/Shoulders	-	-	-	-	172,128	-	-	-	-	172,128
	Smelts Rd adjacent oval	Burra	Kerbing & Shoulders	80,000	-	-	-	-	-	-	-	-	80,000
	Stock St - Chapel to Thames	Burra	Seal Shoulders	-	-	37,493	-	-	-	-	-	-	37,493
	Taylor St (LH) - Morehead to Elder	Burra	Kerbing & Shoulders	-	-	-	-	59,384	-	-	-	-	59,384
	View St - St Just to The Grove	Burra	Kerbing & Shoulders	30,000	-	-	-	-	-	-	-	-	30,000
	West St (RH) - Morehead to Linkson	Burra	Kerbing & Shoulders	30,000	-	-	-	-	-	-	-	-	30,000
	Bruce St (LH)- Lloyd- Kapunda	Eudunda	Footpath and Kerb	100,000	-	-	-	-	-	-	-	-	100,000
	Worlds End Highway	Pt Pass	New Kerb 90m	-	-	26,781	-	-	-	-	-	-	26,781
Kerbing & Water Table	Bath St (LH) - Kangaroo to Queen	Burra	Renewal/ Replacement	-	-	21,425	-	-	-	-	-	-	21,425
	Best Place (RH) Morehead to Highway	Burra	Renewal/ Replacement	-	-	26,781	-	-	-	-	-	-	26,781
	Bridge Tce (RH) - Paxton to End	Burra	Renewal/ Replacement	-	-	-	22,174	-	-	-	-	-	22,174
	Church St (LH) - Hill to Justice Lane	Burra	Renewal/ Replacement	-	-	-	22,174	-	-	-	-	-	22,174
	Church St (RH) - Hill to Justice Lane	Burra	Renewal/ Replacement	-	-	-	-	11,475	-	-	-	-	11,475
	Commercial St (RH) - Queen to Kangaroo - Cobblestones	Burra	Renewal/ Replacement	-	-	21,425	-	-	-	-	-	-	21,425
	Commercial St (RH) - Lower Thames to Chapel - Cobblestones	Burra	Renewal/ Replacement	-	-	21,425	-	-	-	-	-	-	21,425

	Commercial St (LH) - Queen to Kangaroo - Cobblestones	Burra	Retaining wall repointing	-	-	-	27,718	-	-	-	-	-	-	27,718
	Commercial St (RH) - Hill St South	Burra	Renewal/Replacement	-	-	16,068	-	-	-	-	-	-	-	16,068
	East St (RH) Kingston to Quarry	Burra	Renewal/Replacement	-	-	10,712	-	-	-	-	-	-	-	10,712
	Hill St (RH) - Church to Commercial	Burra	Renewal/Replacement	-	-	-	22,174	-	-	-	-	-	-	22,174
	Kangaroo St (RH) - Stock to Allen	Burra	Renewal/Replacement	-	-	-	-	40,163	-	-	-	-	-	40,163
	Kingston St (RH) - Pleasant to Koorunga	Burra	Renewal/Replacement	-	-	26,781	-	-	-	-	-	-	-	26,781
	Kingston St (RH) Smelts to Pleasant	Burra	Renewal/Replacement	-	-	32,137	-	-	-	-	-	-	-	32,137
	Linkson St (LH) - West to Jenkin	Burra	Renewal/Replacement	-	-	-	-	17,213	-	-	-	-	-	17,213
	Lower Thames (RH) - Bath to Stock	Burra	Renewal/Replacement	-	-	21,425	-	-	-	-	-	-	-	21,425
	Ludgvan St (LH) - Fore to Tregony	Burra	Renewal/Replacement	-	10,350	-	-	-	-	-	-	-	-	10,350
	Ludgvan St (LH) - Sancreed to Fore	Burra	Renewal/Replacement	-	25,875	-	-	-	-	-	-	-	-	25,875
	Ludgvan St (RH) - Fore to Tregony	Burra	Renewal/Replacement	-	10,350	-	-	-	-	-	-	-	-	10,350
	Ludgvan St (RH) - Sancreed to Fore	Burra	Renewal/Replacement	-	25,875	-	-	-	-	-	-	-	-	25,875
	Ludgvan St (RH) - Tregony to Tremabath	Burra	Renewal/Replacement	-	10,350	-	-	-	-	-	-	-	-	10,350
	Ludgvan St (RH) - Tremabath to Crescent	Burra	Renewal/Replacement	-	15,525	-	-	-	-	-	-	-	-	15,525
	Mitchell Flat (RH) - Blyth to Stock	Burra	Renewal/Replacement	-	-	37,493	-	-	-	-	-	-	-	37,493
	West St (RH) - Linkson to End	Burra	Renewal/Replacement	-	-	-	-	51,639	-	-	-	-	-	51,639
	Young St	Burra	Renewal/Replacement	-	15,525	-	-	-	-	-	-	-	-	15,525
	Market St - Burra Hotel	Burra	Renewal/Replacement	-	15,525	-	-	-	-	-	-	-	-	15,525
	Bridge Terrace	Burra	Renewal/Replacement	-	46,575	-	-	-	-	-	-	-	-	46,575
Signs	Main St	Terowie	Renewal / Replacement General Store	10,000	-	-	-	-	-	-	-	-	-	10,000
	Council Wide	Various	NHVR Upgrades	150,000	150,000	-	-	-	-	-	-	-	-	300,000
Signs	Heritage Passport Signage	Burra	Replacement tourist signage - Partially grant funded	172,250	172,250	-	-	-	-	-	-	-	-	344,500

Sheeted Roads	Council wide	Various	Programmed	2,367,620	1,823,804	1,773,120	2,428,146	2,513,131	2,601,091	2,692,129	2,786,353	2,883,876	2,984,811	24,854,081
			TOTAL	6,511,680	3,669,573	2,496,197	3,414,905	3,322,135	2,993,027	3,036,320	3,034,448	3,081,397	2,984,811	34,544,493

This page has been left intentionally blank

SIX PILLARS – DELIVERING & MONITORING THE PLAN

PILLARS	ENGAGING WITH THE COMMUNITY	STRENGTHENING COMMUNITY	ECONOMIC RESILIENCE
	<i>Council and the Community sharing information and working together</i>	<i>A well-resourced, active & connected community</i>	<i>A strong economy that supports job growth, opportunities for community and business development for a diverse community</i>
METRICS	<ul style="list-style-type: none"> - Data from community survey - Number of website and social media hits - Number of media references to Council and Council activities - 	<ul style="list-style-type: none"> - Number of clubs, memberships, and usage rates, level of activity, club viability and external funding obtained. - Number of community initiated events and activities supported by Council - Visitation rates for Council facilities (libraries, swimming pools, BGVIC) - Patronage of Community Passenger Networks 	<ul style="list-style-type: none"> - Number, value and nature of development and building approvals - Number of visitor nights in Council owned tourism accommodation - Number and value of passport sales - Number of new businesses and services - Number of visitors to the BGVIC
	<p>Objective 1: Implement a variety of approaches to share (providing & receiving) information with community.</p> <p>Objective 2: Further develop innovative technology and social media to support community engagement.</p> <p>Objective 3: Acknowledge Ngadjuri country and celebrate NAIDOC across the region.</p> <p>Objective 4: Recognise our diverse community, history and culture to support informed decision making.</p> <p>Objective 5: Build capacity in the growth of the digital economy, networking and communication infrastructures in response to the COVID19 pandemic.</p> <p>Objective 6: Assist community, sport and recreation groups to develop and prosper using the "Game On" Getting South Australia Moving Strategy.</p> <p>Objective 7: Activate a disability support group to support, monitor and provide review on the Goyder Disability Access & Inclusion Plan.</p> <p>Objective 8 Develop a Council communication strategy to better engage a diverse range of people from across the Council region, especially children and young people, in local decision making.</p>	<p>Objective 9: Continue to contribute financially to support and actively promote the Mid North Community Passenger Network and explore further options to increase transport options for all residents.</p> <p>Objective 10: Advocate for affordable accommodation in the community particularly to support local employment.</p> <p>Objective 11: Continue to support community groups through equitable access to funding and relevant assistance.</p> <p>Objective 12: Advocate for the retention and further development of locally based and inclusive education, health and community services across the region.</p> <p>Objective 13: Embrace the potential of arts and cultural initiatives and the economy.</p> <p>Objective 14: Activate a yearly events calendar that attracts new and diverse community and commercial events across the region.</p> <p>Objective 15 Support local event management to invigorate community lead events and committees.</p> <p>Objective 16 Identify the needs of our community to support active participation within the community and healthy lifestyles</p> <p>Objective 17 Acknowledge and foster supportive relationships with volunteers across the region to facilitate the ability to share resources and skills through the Goyder Online Hub</p> <p>Objective 18 Continue to financially support Goyder YAC to enable young people to make unique social, cultural and economic contributions into planning the future of their community</p>	<p>Objective 19 Facilitate the provision of essential infrastructure to support economic development in partnership with the private sector and other spheres of government where applicable</p> <p>Objective 20 Advocate for improved broadband access and mobile phone coverage to assist small businesses, farming enterprises and residents to access economic opportunities</p> <p>Objective 21 Committed to growing visitation in the Goyder Region and increasing overnight stays by developing quality visitor experiences</p> <p>Objective 22 Operate the Burra & Goyder Visitor Information Centre as the principal tourism destination to promote tourism experiences in Goyder</p> <p>Objective 23 Continue to maintain existing Council owned accommodation, conference facilities and regularly review management arrangements to maximise community benefit.</p>

OUR ENVIRONMENT & HERITAGE IS PROTECTED & VALUED	COMMUNITY ASSETS & INFRASTRUCTURE	LEADING THE WAY
<p><i>Responsible and well informed management of our natural & built environment & cultural heritage</i></p>	<p><i>A planned and funded infrastructure & Asset Management Program that supports the long-term financial sustainability of Council</i></p>	<p><i>Strong leadership through a cohesive, effective team</i></p>
<ul style="list-style-type: none"> - Council CO₂ emissions based on Australian standards against established baseline - Level of reuse of Community Wastewater Management Scheme (CWMS) treated water - Level of Community Involvement in environment management and land care related groups - Amount of electricity generated from solar infrastructure located in/on community assets <p>Objective 24 Strengthen partnerships with Government agencies and community groups to improve management of biodiversity and natural resources</p> <p>Objective 25 Council will lead and encourage community participation in responsible actions that reduce greenhouse gas emissions and identify and manage climate change impacts through the implementation of a Climate Management Strategy</p> <p>Objective 26 That Council advocate to protect and manage the diverse landscapes, flora and fauna within our region for the enjoyment of community.</p> <p>Objective 27 Maintain existing waste and recycling management practices and continue to investigate efficient and cleaner methods of waste disposal</p> <p>Objective 28 Increase awareness of the importance of our Cornish Mining Heritage and our aim for World Heritage Status</p>	<ul style="list-style-type: none"> - Asset condition rating - Number of kilometres of roads upgraded - Incidence of flooding/drought in sensitive areas - Level of external funding obtained for infrastructure projects - Level of rationalisation or sharing of retained community resources <p>Objective 29 Implement Council's Infrastructure and Asset Management Plan and keep the community informed</p> <p>Objective 30 Continue to develop and implement the Stormwater Management Plans</p> <p>Objective 31 In collaboration with the community identify core community assets to be retained, maintained, managed and improved for community use</p> <p>Objective 32 Encourage shared use of facilities for increased community use such as sporting, recreation and community buildings and grounds</p> <p>Objective 33 Continue to seek additional funding for the development and/or renewal of essential infrastructure</p> <p>Objective 34 Investigate resource sharing with other Councils</p>	<ul style="list-style-type: none"> - Annual staff turnover of between 2.5% and 5% - Number of Elected Members and staff trained in essential skills and undertaking professional development - Staff performance reviews and development processes conducted for both Elected Members and Staff - Data provided in Annual Report that demonstrates level of progress towards outcomes in this Plan <p>Objective 35 Maintain a rating strategy that reinforces the goals of this plan</p> <p>Objective 36 Manage human resources effectively so that staff have the skills, attitudes and knowledge they need to provide consistent, high-quality services and to fulfil their roles</p> <p>Objective 37 Support our Elected Body by providing opportunities to enhance their roles in the community.</p> <p>Objective 38 Continue to review and strengthen customer service protocols</p> <p>Objective 39 Utilise the Legatus Group and the Local to advocate on behalf of Council and the region for legislative change on matters of common interest.</p> <p>Objective 40 Utilise the LGASA to implement government policy & procedure to reduce risk to Councils operations.</p>

ENGAGING WITH OUR COMMUNITY

*Council and the Community sharing
information and working together*

GOYDER OBJECTIVE

Objective 3

Acknowledge Ngadjuri Country and celebrated NAIDOC across the region

Objective 4

Recognise our diverse community, history and culture to support informed decision making

Objective 6

Assist community, sport, and recreation groups to develop and prosper using the “Game On – Getting South Australia Moving” strategy

Objective 7

Activate a disability support group to support, monitor and provide review on the Goyder Disability Access & Inclusion Plan

PROJECTS

- Reconciliation
- Community Development Officer Robertstown
- Nature Play Space Burra
- Nature Play Space Eudunda
- Skate Park Eudunda
- Burra Sports Hub
- Burra & Hallett Pool Works
- Disability Support Group
- Virtual Community Hub

Burra Sports Hub

There are currently four separate sporting and recreation areas in the Burra Township. The 'Sporting Complex' is used by regional and local football, cricket and netball clubs. The complex facility is regularly hired for local, regional and state functions. The second sporting facility is at the Burra Community School – where an indoor stadium, gym facilities and the ovals support local and district basketball, community gym use and a local Hockey Club. The third facility contains the Burra Tennis Club courts and the Dog obedience club arena. The fourth, the town swimming pool is limited in use and a community desire for an all- season pool is warranted.

All facilities are now out-dated and require the following upgrades;

- Sporting complex - new or refurbished clubrooms, a larger function venue and improved playing surfaces and lights.
- The school facilities - correct court size, increase in courts with new floor surfaces. The Hockey Field would be significantly improved with a synthetic surface - however, an upgraded surface and club room would support the club. The gym facility is too small.
- The tennis club have indicated that they may relocate and share facilities at the complex.
- The swimming pool complex is seasonal only and requires a complete upgrade for year-round use.

In 2018 local sporting & recreation groups met to discuss the facilities in Burra. Council has been regularly meeting with Sports Hub Steering Committee members and is wanting to support a community driven project that meets the vision and future demands of Burra. In April 2020 Council sought recommendations on preparing a high-level schematic design for the Burra Sports Hub. The Burra Sports Hub Project aims to release the plans and engage further with community consultation.



Government of South Australia
Office for Recreation and Sport

OFFICE FOR SPORT AND RECREATION STRATEGIC PLAN

2017 – 2021 Capacity and Capability – invest in people, projects and initiatives that increase capability and capacity.



**Commissioner
for Children &
Young People**

COMMISSIONER FOR CHILDREN AND YOUNG PEOPLE STRATEGIC AGENDA 2018 – 2022

Provide oversight and advocacy to strengthen the development and wellbeing of South Australia's children and young people.



**Regional
Development
Australia**

REGIONAL DEVELOPMENT STRATEGY Regional Voice – engage regional stakeholders, businesses and communities to identify ways to grow



Disability Support Committee

"The purpose of the Goyder Disability Support Group is to bring together people living with disability, their families, friends and carers, to enable greater socialisation, reduced isolation and increased engagement with disability support networks throughout the region (both formal and informal)."

Working alongside the Goyder Council's Disability Advisory Group, the informal Goyder Disability Support Group aims to actively support the initiatives of Goyder's DAIP and ensure the general Goyder population are made aware of the needs of people living with disability in the Goyder region.

Supporting documentation: The Regional Council of Goyder's Disability Access and Inclusion Plan (DAIP) 2020-2024".

Community Member

Deb Selway



STATE DISABILITY INCLUSION PLAN 2019 – 2023 Involvement in the Community - Explore the redesign or creation of an app (or other medium) that displays existing and future services and facilities (such as toilets, eateries, sports and recreation facilities, parks and trails, arts organisations and cultural institutions, transport services, beaches that are wheelchair and disability-access friendly).



HEALTH SA – WELLBEING SA Wellbeing SA will foster and coordinate the partnerships required to build resilient and connected communities and work to improve South Australians' mental health and wellbeing



COTA SA REFRAMING AGEING IN SA Respect - We respect and value the contribution and lived experience of Australians as they age and support each person's right to make choices and to participate in their community.

"Bringing together people living with disability, their families, friends and carers, to enable greater socialisation, reduced isolation and increased engagement".



Virtual Community Hub

"The Goyder Virtual Hub project, led by the Burra Age Friendly Team (BAFT) in collaboration with the Regional Council of Goyder and funded by Age Friendly SA, brings together information on community groups and services from across the region in a virtual hub space: www.goyderhub.com. The site showcases the volunteer contributions made by older people in the community and encourages active ageing and engagement right across the population to help minimise loneliness and isolation for residents. Develop a sustainable network that provides easy access to information and resources for older people, providing an interactive resource to volunteering, services and activity. Celebrating the contribution that older people make within the community.

It is envisioned that a network of Goyder Community Hub centres be established in each of the 4 Wards of Goyder, to create a physical space for people of the region to come together in their local towns and engage in various community activities".

Goyder Online Project Officer
Deb Selway

Council received grant funding for the establishment of the Goyder Hub Website in 2020 and the site was launched in September 2021. This website will continue to be managed by local volunteers with ongoing support from Councils and the Burra and Goyder Visitor Information Centre.



STATE DISABILITY INCLUSION PLAN 2019 – 2023 Involvement in the Community - Explore the redesign or creation of an app (or other medium) that displays existing and future services and facilities (such as toilets, eateries, sports and recreation facilities, parks and trails, arts organisations and cultural institutions, transport services, beaches that are wheelchair and disability-access friendly).



NATIONAL DISABILITY SERVICES STRATEGIC PLAN 2020 - 2021 Resourcing our members to be activists in their communities on issues which matter; Identifying and leveraging opportunities for innovation in the disability sector;



COTA SA REFRAMING AGEING IN SA Respect - We respect and value the contribution and lived experience of Australians as they age and support each person's right to make choices and to participate in their community.



Nature Play Space Burra

The Burra Playground situated at the Thomas Pickett Reserve is overdue for an upgrade due its age and the high level of maintenance required to keep it safe for community use. Rather than replacing the facilities with similar and expensive structured equipment, in response to community feedback, a nature play space is going to be developed. This nature play space will use natural materials and shapes to create a landscape that allows for creative use by children and their families.

Elements in the natural playground will include things like mounds of earth, vegetation, boulders, log structures, stumps, dirt or sand areas, natural water features, tree houses, and large musical instruments. It will also include elements that are complimentary to Burra's heritage to provide educational learning. The new play space will challenge children and ignite their imaginations.

A draft concept plan has been developed and further community consultation will be undertaken before external grant funding is sought to fund the project.



Government of South Australia

SA Health

HEALTH SA STATE PUBLIC HEALTH PLAN 2019 – 2024 Promote
Build stronger communities and healthier environments



**COMMISSIONER FOR CHILDREN AND YOUNGER PEOPLE
FRONT & CENTRE STRATEGIC PLAN 2018 – 2022** Develop
more ways to participate in community life, including
places to hang out and affordable sport & recreational
activities.



GAME ON GETTING SOUTH AUSTRALIA MOVING - Active
young people with good coordination and strong
fundamental movement skills Children are happy, healthy
and confident, and physical activity and literacy is valued,
accessible and supported by the community, leading to a
lifetime of movement. Anyone, anywhere accessing
affordable activities across all lifestyles and pathways.

*"This nature
play space will
use natural
materials and
shapes to
create a
landscape that
allows for
creative use by
children and
their families".*



Nature Play Space Eudunda

To provide an outdoor space for youth, children and families in the township of Eudunda that supports active and healthy recreation. A safe and inclusive space with further collaboration to decide on future scoping ideas with other spaces within the recreational hub vicinity in Eudunda.

Council and the Goyder Youth Advisory Committee will consult with Eudunda community, youth, children, and families to understand their wants and needs, begin the design process in collaboration with Council and Youth representatives, get the project 'shovel ready', take to tender and await grant funding opportunities.

In the end, a multipurpose space is envisaged that will allow for children of diverse ages and families to access and participate safely. To support recreation and exploration within the recreation and education hub that already exists within this area that includes the Preschool, Area School, Sports clubs, caravan park and swimming pool.

Eudunda Preschool have identified a space that could potentially be used for a nature play space.

This project will become stage II to the redevelopment of play spaces at the Eudunda Recreational Grounds once the Eudunda Skate Park is complete. External grant funding will be sought after community consultation.



HEALTH SA STATE PUBLIC HEALTH PLAN 2019 – 2024

Promote Build stronger communities and healthier environments



COMMISSIONER FOR CHILDREN AND YOUNGER PEOPLE

FRONT & CENTRE STRATEGIC PLAN 2018 – 2022 Develop more ways to participate in community life, including places to hang out and affordable sport & recreational activities.



GAME ON GETTING SOUTH AUSTRALIA MOVING - Active

young people with good coordination and strong fundamental movement skills Children are happy, healthy and confident, and physical activity and literacy is valued, accessible and supported by the community, leading to a lifetime of movement. Anyone, anywhere accessing affordable activities across all lifestyles and pathways.



Skate Park Eudunda

The Skate Park aims to provide an outdoor space for youth, children and families in the township of Eudunda that supports active and healthy recreation. Council has collaborated with relevant committees and community and developed a concept plan for the Eudunda Skate Park. A safe and inclusive space with further collaboration to decide on future scoping ideas that connects the current skate park with other spaces within the recreational hub vicinity in Eudunda.

In 2021 Council received 50% grant funding and allocated the remaining 50% from Councils budget.

In December 2021, Council went to tender to seek a consultant to develop construction drawings and specifications for works. Works are scheduled to be completed by early 2023.



Government of South Australia
SA Health

HEALTH SA STATE PUBLIC HEALTH PLAN 2019 – 2024 Promote
Build stronger communities and healthier environments



**COMMISSIONER FOR CHILDREN AND YOUNGER PEOPLE
FRONT & CENTRE STRATEGIC PLAN 2018 – 2022** Develop
more ways to participate in community life, including
places to hang out and affordable sport & recreational
activities.



GAME ON GETTING SOUTH AUSTRALIA MOVING - Active
young people with good coordination and strong
fundamental movement skills Children are happy, healthy
and confident, and physical activity and literacy is valued,
accessible and supported by the community, leading to a
lifetime of movement. Anyone, anywhere accessing
affordable activities across all lifestyles and pathways.

*"Council is
engaging with
Climbing Tree to
explore nature
play concepts".*



Reconciliation

In December 2020 Council passed the following motion; *That Council, prepare a Reconciliation Action Plan and develop Indigenous policies to enable authentic collaboration, engagement and celebration of Ngadjuri culture alongside Cornish and Western culture.*

Following consultation with senior Ngadjuri Elder Aunty Pat Waria-Read Council was successful in seeking grant funding to create a Ngadjuri Basket Sculpture. The artist is award-winning Ngadjuri weaver Sonya Rankine and Sonya will be supported by Aunty Pat and Arts & Cultural Facilitator Ali Eckermann.

This monument will be displayed publicly along the Burra Creek near the public playground where traditional reeds still grow. Set on a stone plinth the actual basket will be constructed utilising bull and copper wire to represent a traditional Ngadjuri basket.

The Ngadjuri basket Sculpture will be the first monument to acknowledge Ngadjuri people on their traditional country. This is a firm and important step towards building stronger relationships to promote the action of reconciliation throughout the Goyder region. This sculpture also signifies potential for a unique Goyder Art Trail increasing tourism and artistic opportunities. The Ngadjuri Basket Sculpture will be promoted through the Visitor Information Centre to meet a growing request by the tourism sector, seeking a First Nations perspective.

The implementation of change is a slow process and Council will unveil the purpose-built monument to acknowledge the living continuum of the Ngadjuri people, and our shared historical presence. A small Survival Day brunch and concert was held in January 2022 to foster new friendships.



LANDSCAPE BOARD SA 2019 – 2029 STRATEGIC PLAN Aboriginal people continue to care for Country and share their natural resource knowledge



NATIONAL INDIGENOUS AUSTRALIANS AGENCY Identifying economic and human capital development opportunities for Indigenous Australians and communities;



RECONCILIATION AUSTRALIA STRATEGIC PLAN 2017 – 2022 Equality and Equity Aboriginal and Torres Strait Islander people participate equally in a range of life opportunities and the unique rights of Aboriginal and Torres Strait Islander Peoples are recognised and upheld



Pool Work Burra & Hallett

Scheduled maintenance and repairs to both community pools including pool tiling at Burra and investigating options for the Hallett pool and replacement of the shade sails.



REGIONAL DEVELOPMENT AUSTRALIA REGIONAL DEVELOPMENT STRATEGY Regional Investment – focus on initiatives that result in increased trade, productivity, profitability, sustainability and growth



OFFICE OF RECREATION, SPORT & RACING SA Strategic Plan 2021 – 2025 Places & Spaces that encourage and support movement, play and performance are accessible to all



INFRASTRUCTURE SA 20 YEAR STATE INFRASTRUCTURE STRATEGY Optimise current assets before building new



Community Support Officer Robertstown

To gain full usage of the Robertstown War Memorial Community Centre would benefit from a part-time Community Engagement Officer. The Community Engagement Officer would be engaged to implement tourist attractions to Southern Goyder such as mountain biking, hiking and bus tours, seek and submit grant funding opportunities and ultimately incorporate and run a Goyder South Tourist Information Centre within the Centre.

The Community Engagement Officer would attend both the Eudunda and Robertstown Community Management Committee meetings and initially be in Eudunda. Council would need to collaborate with both Eudunda and Robertstown community management groups to seek funding for a Community Engagement Officer potentially with funding from the Renewable companies currently developing within the Southern Goyder region.



TOURISM SA THE SOUTH AUSTRALIAN VISITOR ECONOMY SECTOR PLAN 2030
Ongoing regional ambition – highlighting the importance of growing Visitor Economies of Regional South Australia at their maximum rate



TOURISM SA THE SOUTH AUSTRALIAN REGIONAL VISITOR STRATEGY Regional Marketing Priorities – attract the right mix, utilise the right marketing channels, showcasing regional experience strengths and the role of messaging



REGIONAL DEVELOPMENT AUSTRALIA REGIONAL DEVELOPMENT STRATEGY
Regional Voice – engage regional stakeholders, businesses and communities to identify ways to grow



STRENGTHENING COMMUNITY

*A well-resourced, active &
connected community*

GOYDER OBJECTIVE

Objective 11

Continue to support community groups through equitable access to funding and relevant assistance

Objective 13

Embrace the potential of arts and cultural initiatives and the economy.

Objective 14

Activate a yearly events calendar that attracts new and diverse community and commercial events across the region

Objective 17

Support the health and wellbeing of the community through increased participation in active recreation

PROJECTS

- Multi-Purpose Indoor Space Eudunda Hub & Shed
- Town Hall Upgrades Mt Bryan
- Town Hall Upgrades Point Pass
- Town Hall Upgrades Terowie
- Show Hall Upgrades Eudunda
- Art Trail Goyder Wide
- Copper & Stone Music Fest. Burra
- Community Health & Wellbeing Events Goyder Wide
- Inspiration Point Shelter Robertstown
- Eudunda to Hampden Cycling Trail

Multi-Purpose Indoor Space

Eudunda Hub & Shed

"The Eudunda Community Hub and Shed was formed in 2017 to provide a place for community members to come together to socialise, learn new skills, disseminate ideas, and be creative and contribute to community projects. Many of our members are socially isolated due to the lack of transport options, mobility issues and family situations.

At present we have access to 2 large shed areas, and one small demountable building (old Council lunchroom). This building is aged and requires a high level of ongoing maintenance to ensure a safe working environment. The shed areas are predominantly used for woodworking, welding and mosaic work and are operating pretty much at capacity. Having an extra building twice the size of our existing demountable would give us the room we need to provide a suitable sized area for the craft activities and could also be used for hosting guest speakers and for running workshops. We would retain the existing lunchroom as our kitchen.

The Hub provides an opportunity for community engagement and connection within Eudunda and its surrounding communities. This project will ensure the sustainability and further development of the facility to meet the increasing membership and diverse needs of its members and the different activities that evolve. The new indoor workspace will ensure better access and inclusion for all".

Eudunda Community Hub & Shed Committee

Julie Mathews



COTA SA REFRAMING AGEING IN SA Diversity – We value the great diversity that characterises Australians of all ages and are committed to genuine exchange and engagement with all older people in Australia



COUNCIL FOR THE ARTS CORPORATE PLAN 2021 – 2025 Arts & Creativity are valued – We will increase awareness of the value of public investment in arts and creativity



VETERANS AFFAIRS SA VETERAN MENTAL HEALTH & WELLBEING STRATEGY AND NATIONAL ACTION PLAN 2020 – 2023 Enhancing partnerships across government, communities, businesses, service providers, researchers and ex-service organisations to improve mental health and wellbeing outcomes for veterans and their families



Town Hall Upgrades Mt Bryan

"The Mount Bryan Town Hall is community owned and used for multiple community group meetings and provides space for low-cost entertainment for the local community and townships.

Due to its age, it requires significant work to be completed to the roof and ceilings to ensure its continued safety and for ongoing access for community members in the future.

The Mount Bryan Progress Association have received a quote for the work required on the hall to ensure its longevity. The Town Hall upgrade will continue to ensure that the hall can be used for functions (its main fundraising for the committee) and will allow for the community to use it as a community gathering space for meeting and events.

This project will allow further access for Sir Hubert Wilkins and Mount Bryan history displays, as well as military commemorations".

Mount Bryan Progress Association
Secretary Deb Quinn



INFRASTRUCTURE SA 20 YEAR STATE INFRASTRUCTURE STRATEGY Optimise current assets before building new.



HEALTH SA STATE PUBLIC HEALTH PLAN 2019 – 2024 Build stronger communities and healthier environments



INCLUSIVE SA STATE DISABILITY INCLUSION PLAN 2019 – 2023 Involvement in the community, access to services



Town Hall Upgrades Point Pass

The Point Pass Hall is community owned and used for events for the local community and townships.

The Hall due to its age will require further assessment to identify what maintenance works are required ceilings to ensure its continued safety and longevity.

Council and the Committee will work towards identifying costing and scheduling works as required.



INFRASTRUCTURE SA 20 YEAR STATE INFRASTRUCTURE STRATEGY Optimise current assets before building new.



HEALTH SA STATE PUBLIC HEALTH PLAN 2019 – 2024 Build stronger communities and healthier environments



INCLUSIVE SA STATE DISABILITY INCLUSION PLAN 2019 – 2023 Involvement in the community, access to services



Town Hall Upgrades Terowie

The Terowie Institute is a large community building which over many decades has been used as a venue for weddings, parties, elections, meeting venue and dance hall. Nowadays, the building is generally used by small local groups for social gatherings, exhibitions, and functions.

Repairs include; salt damp repairs, stage curtain refurbishment, fixtures – such as window and door frames, exterior painting and façade repairs, minor landscaping, ceiling repairs to the supper room, cleaning and polishing of timber floor and solar PV installation.

Council will collaborate with the committee to schedule as required.



INFRASTRUCTURE SA 20 YEAR STATE INFRASTRUCTURE STRATEGY Optimise current assets before building new.



HEALTH SA STATE PUBLIC HEALTH PLAN 2019 – 2024 Build stronger communities and healthier environments



INCLUSIVE SA STATE DISABILITY INCLUSION PLAN 2019 – 2023 Involvement in the community, access to services



Show Hall Upgrade Eudunda

"It is important to us to improve the facility to keep it up to a workable and safe standard. It needs major attention in some areas and it is a vital asset to the Eudunda Show and the community."

Show Hall Roof - We have been trying for years to get this replaced/re roofed. It is deteriorating and needs to be replaced due to rust, leakages, etc. Re-cladding walls - show hall walls need to be cladded to be more user friendly during the seasons throughout the year, plus what is there is years and years old. Electrical work - The show hall is in need of electrical upgrades throughout the building. Improvements have begun with a new mains power box recently installed but we have many power points that need attention for it to be safe to use. 3 phase power is also needed to be installed on stage to cater for various needs for functions held in the building throughout the year. All these improvements are seen as a necessary requirement to ensure the community can safely continue to use the building. Its size and ability to cater for various functions and activities such as 24hour trial, Walky 100, lots of clearing sales, markets etc., there is no other building in the district that can cater for large events such as these".

Eudunda Show Committee
Secretary Melinda Schutz



INFRASTRUCTURE SA 20 YEAR STATE INFRASTRUCTURE STRATEGY Optimise current assets before building new.



PREMIER SA GROWTH STATE SA OUR PLAN FOR PROSPERITY

Infrastructure – The government aims to lift the productivity, efficiency and capacity of infrastructure that delivers long-term benefit for South Australia, with a focus on projects that enables economic activity in growth state sectors, improving supply chains, enabling access to jobs and better connecting enterprises to their markets



REGIONAL DEVELOPMENT AUSTRALIA REGIONAL DEVELOPMENT STRATEGY

Regional Investment – Focus on initiatives that result in increased trade, productivity, profitability, sustainability and growth

"A vital asset to the Eudunda Show Society & the Community"



Art Trail Goyder Wide

There has been a very clear economic decrease in small country towns and initiatives that could benefit such communities include the development of an Art Trail throughout the mid north region. There is a clear indication of increased tourism in rural townships in Victoria and Queensland that have implemented large scale artwork as part of their town's attractions, particularly on silos. In 2020 Farrell Flat Community Management Committee received grant funding and the Eudunda Business & Tourism Committee received grant funding to paint their respective township silos. Both now feature on the National Silo Trail, adding another dimension to local tourism.

Concise consultation is necessary to develop artistic ventures to add benefit to the Goyder community and economy, historic outlook and social culture. Artwork would also increase features on prominent walking trails including the Lavender Federation Trail & Eudunda to Hampden Trail.

In 2019 & 2022 Council in collaboration with Country Arts SA were successful in receiving grants funding to employ an Arts & Cultural Facilitator. The key objective in this role is to liaise with the wider Goyder community. The addition of sculptural artworks will add new dimensions to the Goyder art Trail and invite local residents to participate in the artistic process.

Eudunda Silo Project Stage II includes viewing facilities, artwork, landscaping, parking, BBQ & shelter and a picnic table. Farrell Flat Silo Project Stage II includes safe access, interpretive signage, gravel resurfacing and fencing.



COUNTRY ARTS SA STRATEGIC PLAN 2021 – 2025 Support & empower artists, arts workers and organisations in regional South Australia to develop their practice, produce extraordinary arts experiences and share their unique stories.



AUSTRALIAN COUNCIL FOR THE ARTS CORPORATE PLAN 2021 – 2025 Australians are transformed by arts and creativity – We will enable more opportunities for Australians to be captivated by, and inspired through, experiencing arts and culture.



PREMIER & CABINET SA ARTS & CULTURE PLAN SOUTH AUSTRALIA 2019 – 2024 To promote the role of arts & culture in enriching the lives of all South Australians, to champion Aboriginal and Torres Strait Islander arts & culture.



Copper & Stone Music Fest. Burra

In partnership with Revive the regions, Council will present the second Neoen Copper & Stone Music Fest. Burra in February 2023. The event will be held at the Paxton Cottages precinct and will be an all-day family friendly event.

The music festival will attract a large intrastate and local attendance. It will boost local business, in particular accommodation and food businesses as well as fuel and other tourism experiences within the area.

The Copper & Stone Music Fest. Burra will be a yearly summer event and Council envisage the event growing into a two-day event. Burra will have successfully created a premium annual event that will be a must do for everyone's calendar at minimal investment.

Council has committed to an ongoing contract and will receive 50% of the gross profit from the sale of Merchandise. The Council own all Intellectual Property rights in and to the name Copper & Stone Music Fest- Burra.



COUNTRY ARTS SA STRATEGIC PLAN 2021 – 2025 Support & empower artists, arts workers and organisations in regional South Australia to develop their practice, produce extraordinary arts experiences and share their unique stories.



AUSTRALIAN COUNCIL FOR THE ARTS CORPORATE PLAN 2021 – 2025 Australians are transformed by arts and creativity – We will enable more opportunities for Australians to be captivated by, and inspired through, experiencing arts and culture.



TOURISM INDUSTRY COUNCIL OF SOUTH AUSTRALIA STRATEGIC PLAN 2019 – 22 Growing TICSA's internal capacity and capability to deliver value to members and to the growth of the SA Tourism Industry

NEOEN
COPPER & STONE
BURRA

NEOEN



SATURDAY 5TH FEBRUARY 2022

Community Health & Wellbeing Events Goyder Wide

Following on from the success of community health and well-being events provided by Council previously Council will be providing a disability and aging expo.

Council in partnership with health agencies and community services is planning a day for community members to attend and hear from guest speakers on a range of health topics as well as gather information from local services providers.

The expo will be delivered to other townships in Goyder at a future date.



Government of South Australia
Office for Recreation, Sport and Racing

OFFICE OF RECREATION, SPORT & RACING SA STRATEGIC PLAN 2021 – 2025 Places & Spaces that encourage and support movement, play and performance are accessible to all



HEALTH SA WELLBEING SA STRATEGIC PLAN 2020 – 2025
Mental health and wellbeing and suicide prevention – Wellbeing SA will foster and coordinate the partnerships required to build resilient and connected communities and work to improve South Australian's mental health and wellbeing



INCLUSIVE SA STATE DISABILITY INCLUSION PLAN 2019 – 2023 Involvement in the community, access to services, promoting the rights of people living with a disability



Inspiration Point Shelter Robertstown

"Currently there is no seating or shelter for community and visitors whilst stopping to take photos and have a picnic or break at the lookout. Providing seating and a shelter will encourage people to stay longer also providing protection during the Summer/Winter months so that the lookout becomes a site to visit all year round.

Inspiration Point is a well-known look out over Robertstown towards Goyder's line with views to the River Murray.

Inspiration Point has become a part of the Goyder Goodness experience to support tourism in the region. Providing a space for viewing and a picnic area will support the local community centre and general store through the ability to sell local produce, goods and coffee for visitors for their experience".

Robertstown & Districts Community Management Committee
Sharon Tremaine



WALKING SA STRATEGIC PLAN 2017 – 2019 Promote walking and grow the number of people walking across the states



OFFICE OF RECREATION, SPORT & RACING SA GAME ON GETTING SOUTH AUSTRALIA MOVING High quality and accessible public open spaces for active recreation – diverse, activated spaces and destinations with efficient amenities and connectivity that encourage active communities



HEALTH SA STATE PUBLIC HEALTH PLAN 2019 – 2024 Promote – building stronger communities and healthier environments



Eudunda to Hampden Cycling Trail

Local residents and cycling enthusiasts asked that Council should explore the possibility of ownership or a lease from the state for the section of railway corridor between Eudunda to Hampden. A motion was passed to this effect in February 2020.

"The Lavender Federation Trail follows the old railway alignment from Eudunda Station to Hampden Station. This is an existing trail which is located outside of the former rail alignment and mainly follows the fence line. The walk is 11km return in length and is a moderate grade. The walk starts at the Eudunda Station and passes the silos, old station and through the town of Eudunda before linking back with the old alignment, which rises gradually to Hampden where it terminates at the remnants of the former Hampden Station. It offers great views of Eudunda and beyond as you ascend towards Hampden".

Clare Valley Tourism Region New Trail Experiences Report

The Department of Infrastructure & Planning have completed the contamination survey and are preparing a lease of the rail corridor for Councils consideration. Council has allocated \$100,000 towards this project and will prepare a detailed project plan.



WALKING SA STRATEGIC PLAN 2017 – 2019 Promote walking and grow the number of people walking across the states



ENVIRONMENT & WATER SA GROWING OUR HERITAGE FUTURE Tourism activation conserves and enhances heritage places, sites and landscapes



HEALTH SA STATE PUBLIC HEALTH PLAN 2019 – 2024 Promote – building stronger communities and healthier environments

"The Eudunda to Hampden track offers great views of Eudunda and beyond as you ascend towards Hampden".

ECONOMIC RESILIENCE

A strong economy that supports job growth, opportunities for community and business development for a diverse community

GOYDER OBJECTIVE

Objective 19

Facilitate the provision of essential infrastructure to support economic development in partnership with the private sector and other spheres of government where applicable

Objective 21

Committed to growing visitation in the Goyder Region and increasing overnight stays by developing quality visitor experiences

Objective 22

Operate the Burra & Goyder Visitor Information Centre as the principal tourism destination to promote tourism experiences in Goyder

PROJECTS

- Historical, geographical & wayfinding signage Robertstown
- Interpretive Signage Eudunda
- Streetscape & Beautification Burra
- Streetscape & Beautification Eudunda
- Memorial Gardens Upgrade Hallett
- Centre for Renewable Excellence
- Booborowie Recreation Ground
- Eudunda Recreation Ground
- Hallett Memorial Ground
- Sir Hubert Wilkins RV Site
- Caravan Parking Burra
- Paxton Square Cottages Upgrades
- Burra Heritage Passport Product Upgrade

Historical Geographical & Wayfinding Signage Robertstown

"There are three projects for signage in the region that will improve and develop the tourist experience in the Goyder region:

1. There have been 2 cycling tours and 2 driving tours that are unmarked at the moment. Through the provision of historical and geographical markers and wayfinding signs there will be better access to these tours for community and visitors. They will add to the tourist experience of driving holidays and to push people out further through the Goyder region.
2. The towns/sites that the Robertstown Community Management Committee would like wayfinding signs for include Emu Down, Brady Creek, Inspiration Point, White Hill and Spring Art Creek. There are many sites such as old schools/churches/council offices that are unmarked and therefore it is important that these sites are marked to ensure that the history of the smaller towns is retained and valued.
3. Follow the sheep trail will see small Jed Dunstan sheep signs created to provide a tour through Robertstown and surrounding town and will identify significant historical sites and community spaces.

Through the development of driving and cycling trails the Robertstown Community Management Committee have the opportunity to develop a booklet which can be sold for fundraising at the Community Centre to provide more information to the visitors undertaking the trails".

Robertstown & Districts Community Management Committee
Chairperson Sharon Tremaine



TOURISM SA - SA REGIONAL VISITOR STRATEGY – SA VISITOR ECONOMY SECTOR PLAN Regional marketing priorities: attract the right mix, utilise the right marketing channels



WALKING SA STRATEGIC PLAN 2017 – 2019 Promote walking and grow the number and diversity of people walking across the states



REGIONAL DEVELOPMENT AUSTRALIA REGIONAL DEVELOPMENT STRATEGY Regional Investment – focus on initiatives that result in increased trade, productivity, profitability, sustainability and growth



"They will add to the tourist experience of driving holidays and to push people out further through the Goyder region".

Eudunda Interpretive Signage

Detailing the history and stories of local buildings and places.

When Eudunda celebrated 125 years of white settlement in 1995, Gustav and his dog first appeared as figurines, named after one of the fictional characters in a Colin Thiele Book. The Eudunda Family Heritage Committee adopted Gustav and his Dog as its official logo in acknowledgment of the District's hardworking Pioneers and their faithful, four legged offsideers.

'Gustav & Dog' silhouettes are currently attached to places of significant interest within the town and surrounding community. These are included in the self-drive tour maps. Interpretive signs placed alongside these silhouettes would make the information which is currently on the 'Tour Maps' available to everyone at all times, not only those with tour maps.

The silhouette also appears on the shop / building histories. Shop/building histories are currently presented on laminated parchment paper in A4 sized frames made from local salvaged floorboards. Updating the laminated parchment to corflute will ensure ongoing durability.



TOURISM SA - SA REGIONAL VISITOR STRATEGY – SA VISITOR ECONOMY SECTOR PLAN Regional marketing priorities: attract the right mix, utilise the right marketing channels



WALKING SA STRATEGIC PLAN 2017 – 2019 Promote walking and grow the number and diversity of people walking across the states



REGIONAL DEVELOPMENT AUSTRALIA REGIONAL DEVELOPMENT STRATEGY Regional Investment – focus on initiatives that result in increased trade, productivity, profitability, sustainability and growth



Streetscape & Beautification Burra

The streetscape of Market Square (Kooringa) is the visual identity of Burra. The current streetscape is rundown and careful consideration will be given to planning as outlined in the Conservation Management Plan to ensure a design is implemented that respects and recognises our Cornish Mining Heritage and is supportive of community identity and good urban design.

At a later date, Council will investigate the opportunity to renew the roadside garden verges throughout the centre of town.

The rejuvenation of Market Square incorporating the southern gateway, south west Kooringa, south east Kooringa and Paxton Square. The amenity and character of this precinct will be protected and reinforced limiting development to civic, community and landscape enhancement in compliance with Councils Burra Works Practise Manual and the policies provided as part of the Conservation Management Plan. Council will develop a master plan for the rejuvenation of Market Square as the main focus for commercial and civic activity. Work will include traffic management, reinstating the street typology and conservation works on all heritage listed places.

Council adopted the Australian Cornish Mining Sites: Burra Conservation Management Plan & Town Wide Policies in June 2021 including the future desired characteristics of 'Kooringa'.



HERITAGE COUNCIL OF SA STRATEGIC PLAN TOWARDS 2025

Adequate government resources dedicated to promoting heritage tourism, protection and conservation



ENVIRONMENT & WATER SA DEVELOPING A STRATEGIC DIRECTION FOR HERITAGE TOURISM IN SOUTH AUSTRALIA

Articulating the unique heritage stories and experiences that define SA's identity and encourage visitors to travel to our state, stay longer and spend more



TOURISM SA SOUTH AUSTRALIAN VISITOR ECONOMY SECTOR PLAN – SA REGIONAL VISITOR STRATEGY

Regional Marketing Priorities; attract the right mix, utilise the right marketing channels, showcasing regional experience strengths, role of messaging

“A design that respects and recognises our Cornish Mining Heritage”.



Streetscape & Beautification Eudunda

It was discussed at a Council meeting that the kerbing/path upgrade needed to be part of a larger project encompassing the repair work of the verandah posts/gutters and re-painting the shop fronts. The objective being that if a suitable grant opportunity become available an application would be considered for 'Main Street Upgrades'.

Council funded the renewal of the paved footpaths in the town centre. This work will be completed stages.

Beautification projects may include, wall Murals / street art - artistic impressions on buildings with large, empty walls. Varied themes have been suggested. Enhancing high foot traffic areas with bench seating, landscaping is also envisaged. The Youth Advisory Committee have submitted a proposal to complete 3 art projects in this space, place making, Lavender Federation Trail Art and Stobie Pole and Mosaic Pot Art. The Eudunda Garden Volunteers have asked that two sculptures be placed within the Eudunda Memorial Garden and a large Shelter be built.



**TOURISM SA SOUTH AUSTRALIAN VISITOR ECONOMY
SECTOR PLAN – SA REGIONAL VISITOR STRATEGY**
Regional Marketing Priorities; attract the right mix, utilise the right marketing channels, showcasing regional experience strengths, role of messaging



**REGIONAL DEVELOPMENT AUSTRALIA REGIONAL
DEVELOPMENT STRATEGY** Regional Voice – Engage stakeholders, businesses and communities to identify ways to grow



**PREMIER & CABINET SA ARTS & CULTURE PLAN SOUTH
AUSTRALIA 2019 – 2024** To promote the role of arts and culture in enriching the lives of all South Australians, to empower South Australia's makers and creators

***“Enhancing high foot
traffic areas with
bench seating, art
and landscaping is
envisaged”.***

Memorial Gardens Upgrade Hallett

The Gardens are adjacent to the Hallett Town Hall and contain the War Memorial, Rotunda and are an integral part of the town's streetscape. The Hallett Community and Sports Association have requested that the Memorial Gardens be redesigned so they are more suitable for picnics and other passive recreation.

Council has allocated \$30,000 towards this project including fencing, flagpole replacement, rotunda refurbishment and enhanced garden amenities.

"The aim of this objective is to maintain, upgrade and community assets (such as the Hall & Memorial Gardens) to maximise current use and preserve our assets for future generations".

Hallett Community & Sports Association
Vice-Chairperson Kristine Peters



VOLUNTEERING SA 2020 – 2023 STRATEGIC FRAMEWORK
Developing the volunteering sector



TOURISM SA SOUTH AUSTRALIAN VISITOR ECONOMY SECTOR PLAN – SA REGIONAL VISITOR STRATEGY Regional Marketing
Priorities; attract the right mix, utilise the right marketing channels, showcasing regional experience strengths, role of messaging



VETERANS AFFAIRS SA VETERAN MENTAL HEALTH & WELLBEING STRATEGY AND NATIONAL ACTION PLAN 2020 – 2023
Enhancing partnerships across government, communities, businesses, service providers, researchers and ex-service organisations to improve mental health and wellbeing outcomes for veterans and their families



Centre for Renewable Excellence

Council will lead a team of innovative and creative experts with direct links to Council to collaborate and create a Centre for Renewable Excellence where both heritage and technology meet and engender economic growth and resilience within the region. Encourage future renewable energy projects to the region, education and research, conservation and preservation of heritage assets and infrastructure, incorporating unique industries and a world heritage bid in 2027.

Council will draw on broad collaboration by stakeholders with interests invested in the Council area to create a themed set of joint objectives that are complimentary to stakeholder values and strategies to strengthen the community and in turn create economic resilience.

Council established the Goyder Economic Development & Resilience Taskforce in 2019 and met with its partners in February 2020 to discuss key outcomes including a concept plan for the Centre for Renewable Excellence.



Government of South Australia

Department for Environment
and Water

**DEPARTMENT FOR ENVIRONMENT AND WATER SA
CLIMATE CHANGE ACTION PLAN 2021 – 2025** Climate smart economy - South Australia, particularly regional areas, can prosper by further developing low emissions and climate resilient technologies, industries and businesses.



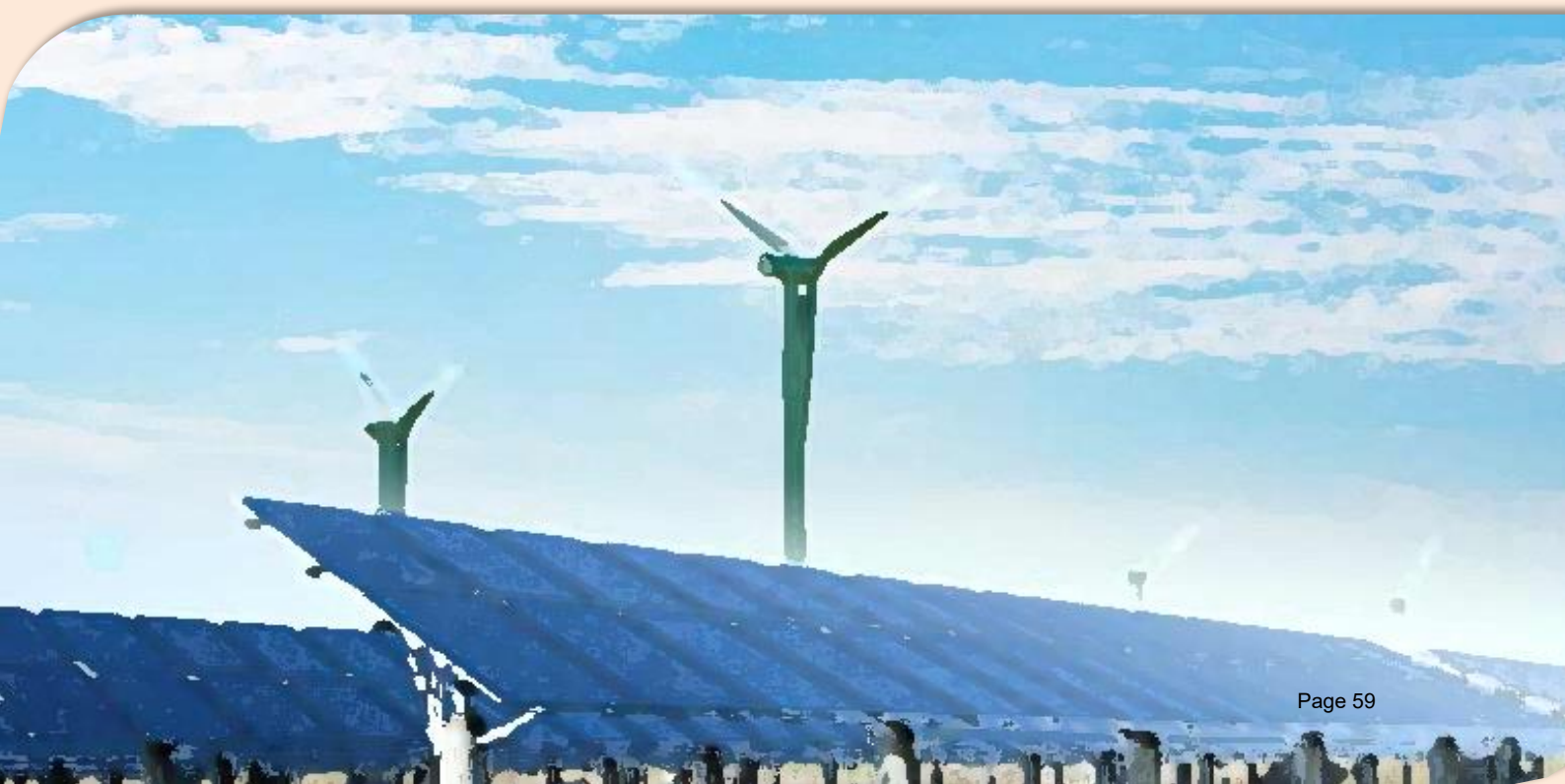
**CITIES POWER
PARTNERSHIP**

**CLIMATE COUNCIL, CITIES POWER PARTNERSHIP CPP
PLEDGE** Work Together & Influence – set up meetings and attend events to work with other cities on tackling climate change.



InfrastructureSA

**INFRASTRUCTURE SA 20 YEAR INFRASTRUCTURE
STRATEGY** Prioritise infrastructure that contributes to economic and job growth.



Eudunda Recreation Ground

Council met with the Eudunda Business & Tourism Association to discuss matters of interest. What resulted was a collaboration between EBat and Council to complete the following at the Eudunda Recreation Ground located at Lot 500 Morgan Road Eudunda;

1. A full site survey completed by Council.
2. Discuss with State Government the option of transferring the land to Council.
3. Develop a Site Master Plan with EBat & Community to establish land use, planning & development, existing tenancies, leases & licenses and any amendments required.
4. Pool & gym facility risk management plan to be completed by Council.
5. Top carpark land survey and concept plan.



REGIONAL DEVELOPMENT AUSTRALIA REGIONAL DEVELOPMENT STRATEGY Regional Services – identify regional service gaps and put in place services for community safety, wellbeing and liveability



INCLUSIVE SA STATE DISABILITY INCLUSION PLAN 209 – 2023
Involvement in the community, promoting the rights of people living with a disability, access to services



OFFICE OF RECREATION, SPORT & RACING GAME ON GETTING AUSTRALIA MOVING Sustainable sport and recreation sector A collaborative and strategic approach that makes the delivery of sport sustainable, affordable and equitable, and ensures cost does not present a barrier to participation.

"Develop a Site Masterplan".

Hallett Recreation Ground

"Upgrading the Recreation Ground as a highly-desirable camping and holiday destination for families, including improved camping facilities, activities for children, better connection to Hallett businesses, and reinforcing the 'Hub of Three Great Trails' brand [Drive].

'A camping holiday destination'.

The aim of this objective is to continue the upgrade of the Recreation Grounds to capitalise on the increased level of domestic travel as a result of COVID, and make the Rec Grounds an active and entertaining space to complement the Hallett Community Hub and provide improved facilities and amenities for locals and visitors"

Hallett Community Sports Association

Vice-Chairperson Kristine Peters



TOURISM SA - SA REGIONAL VISITOR STRATEGY SOUTH AUSTRALIAN VISITOR ECONOMY SECTOR PLAN

Regional Marketing Priorities: Attract the right mix, utilise the right marketing channels, showcase regional experience strengths



REGIONAL DEVELOPMENT AUSTRALIA REGIONAL DEVELOPMENT STRATEGY

Regional Voice – Engage regional stakeholders, businesses and communities to identify ways to grow



HEALTH SA STATE PUBLIC HEALTH PLAN 2019 – 2024

Promote – Building stronger communities and healthier environments

"A camping holiday destination".



Booborowie Recreation Ground

The Booborowie Community is extremely proud to have independently funded most of the projects instigated in the Booborowie Township. The community has identified a need to upgrade the Recreation Ground Precinct as a result of increased community use especially by youth and families within the township.

The Booborowie Recreation Ground upgrade will see an upgrade of the kitchen facilities with a new dishwasher, a defibrillator for the Bowling Club, three new tennis nets, a net to protect the windows of the new complex, new carpet for the practise cricket pitch and upgrade of irrigation system to the oval. This project will provide the community with opportunities to be come together to be active, to play, to meet and to socialise.



INCLUSIVE SA STATE DISABILITY INCLUSION PLAN 209 – 2023
Involvement in the community, promoting the rights of people living with a disability, access to services



REGIONAL DEVELOPMENT AUSTRALIA REGIONAL DEVELOPMENT STRATEGY Regional Services – identify regional service gaps and put in place services for community safety, wellbeing and liveability



OFFICE OF RECREATION, SPORT & RACING GAME ON GETTING AUSTRALIA MOVING Sustainable sport and recreation sector A collaborative and strategic approach that makes the delivery of sport sustainable, affordable and equitable, and ensures cost does not present a barrier to participation.

“This project will provide the community with opportunities to be come together to be active, to play, to meet and to socialise”.



Caravan Parking Burra

The town centre of Burra doesn't provide adequate parking options for caravans and camper trailers. With an increase of such particular vehicles to the region and the potential to increase tourism Council has identified a need to improve street parking.

Council has listened to travellers to the region, RV and Caravan clubs and community residents that own caravans, boats or trailers to identify the needs of these particular travellers to our town with the potential to host events that cater specifically to RV's & Caravans to encourage further visitation to the Goyder region.

As part of Council's Urban Planning Requirements in our aim for World Heritage Parking availability for Caravans will be incorporated accordingly.



COTA SA REFRAMING AGEING IN SA Diversity – We value the great diversity that characterises Australians of all ages and are committed to genuine exchange and engagement with all older people in Australia



INCLUSIVE SA STATE DISABILITY INCLUSION PLAN 2019 – 2023
Involvement in the community, promoting the rights of people living with a disability, access to services



TOURISM SA SOUTH AUSTRALIAN VISITOR ECONOMY SECTOR PLAN – SA REGIONAL VISITOR STRATEGY Regional Marketing Priorities; attract the right mix, utilise the right marketing channels, showcasing regional experience strengths, role of messaging



Paxton Square Cottages Upgrade

Two rooms at Paxton Square Cottages have been identified for upgrade to become luxury accommodation (not 5 star, as this is serviced based) to meet the lack of high end accommodation in the region. This upgrade will include a new complete up-market fit out to all rooms including an outdoor patio area in both cottages.

This upgrade will support the use of the function room for weddings and special events in providing special accommodation for guests. A draft concept plan was sought from SJM Builders to provide a starting point for the build. While the initial concept plan has been deemed excessive, further investigations in the future will continue to develop a plan that is cost effective. Once this is developed external funding through grants will be sought to activate the project.



REGIONAL DEVELOPMENT AUSTRALIA REGIONAL DEVELOPMENT STRATEGY Regional Services – identify regional service gaps and put in place services for community safety, wellbeing and liveability



TOURISM SA SOUTH AUSTRALIAN VISITOR ECONOMY SECTOR PLAN – SA REGIONAL VISITOR STRATEGY Regional Marketing Priorities; attract the right mix, utilise the right marketing channels, showcasing regional experience strengths, role of messaging



HERITAGE COUNCIL OF AUSTRALIA AUSTRALIAN HERITAGE COUNCIL STRATEGIC PLAN 2018 - 2021 Conserve - Adequate government resources dedicated to promoting heritage tourism, protection and conservation, Elevated prominence of heritage for the community, businesses and visitors, willing new owners of State Heritage Places



Burra Heritage Passport Upgrade

The town of Burra is rich with mining heritage and most of its 1800s legacy is still intact. Burra is recognised as a place of National Heritage Significance and the Burra Heritage Passport is presently its premier tourist attraction. Council and the National Trust Burra Branch have an agreement for the Burra Heritage Passport Trail. The Burra Heritage Passport tour is a self-guided tour, providing access to the townships most intriguing sites.

Council manage and maintain the following sites: The Monster Mine Area, Morphet's Engine House, Powder Magazine, Unicorn Brewery Cellars, Smelts Paddock and Hampton Village. National Trust Burra Branch manage and maintain the following sites: Bon Accord Museum, Redruth Gaol, Miners Dugouts, Police Lockup, Malowen Lowarth Cottage and Market Square Museum

The passport remains static in its current form, and in some instances the buildings are dilapidated due to high maintenance costs in order to preserve the heritage sites. There is certainly a need that the Burra Heritage Passport Trail be transformed to an immersive tourism experience that showcases Burra's National Heritage listing and supports the proposal for World Heritage. Enhancing the existing heritage experience with a more up to date approach e.g. incorporating digital technology and focus on storytelling. Offering visitors a unique Heritage experience through engagement, connection, immersion and authenticity.

A draft strategy has been prepared that identifies opportunities for upgrading of sites and methods to enhance the visitor experience and will be further developed in partnership with stakeholders including the National Trust. External funding needs to be sought to activate these projects.

Council was successful in obtaining \$270,000 grant funding in 2021 to upgrade and revitalise the signage including interpretive displays and digital technology such as QR codes. This project is due for completion in 2024.



AUSTRALIAN ICOMOS 2017 – 2022 STRATEGIC PLAN Engage with contemporary issues in cultural heritage, enhance recognition of Australian Icomos



TOURISM SA SOUTH AUSTRALIAN VISITOR ECONOMY SECTOR PLAN – SA REGIONAL VISITOR STRATEGY Regional Marketing Priorities; attract the right mix, utilise the right marketing channels, showcasing regional experience strengths, role of messaging



HERITAGE COUNCIL OF AUSTRALIA AUSTRALIAN HERITAGE COUNCIL STRATEGIC PLAN 2018 - 2021 Collaborate with the Department, communities, organisations, academic institutions, and all levels of government to identify opportunities to create new innovative partnerships and strengthen existing ones.



Sir Hubert Wilkins RV Site

The Mt Bryan Community has expressed an interest in improving the facilities at the Sir Hubert Wilkins park to encourage drivers to stay in the region, rest, revive and increase tourism and further promote the 'Dares Hill' tourist drive. The Community foresee the facilities including a dump point, coin operated shower facility, tourist points of interest, wayfinding, route information incorporated into an information bay & shelter, powered sites, and repairs to the Sir Hubert Wilkins Mosaic as an important, historical, focal point of interest.

A draft concept plan will need to be developed in collaboration with community and Council.



REGIONAL DEVELOPMENT AUSTRALIA REGIONAL DEVELOPMENT STRATEGY Regional Services – identify regional service gaps and put in place services for community safety, wellbeing and liveability



TOURISM SA SOUTH AUSTRALIAN VISITOR ECONOMY SECTOR PLAN – SA REGIONAL VISITOR STRATEGY Regional Marketing Priorities; attract the right mix, utilise the right marketing channels, showcasing regional experience strengths, role of messaging



HERITAGE COUNCIL OF SA STRATEGIC PLAN TOWARDS Conserve Adequate government resources dedicated to promoting heritage tourism, protection and conservation, Elevated prominence of heritage for the community, businesses and visitors, willing new owners of State Heritage Places

"A place to rest, revive and increase tourism and further promote the 'Dares Hill' tourist drive".

OUR ENVIRONMENT & HERITAGE IS VALUED & PROTECTED

A strong economy that supports job growth, opportunities for community and business development for a diverse community

GOYDER OBJECTIVE

Objective 24

Council will lead and encourage community participation in responsible actions that reduce greenhouse gas emissions and identify and manage climate change impacts through the implementation of a Climate Management Strategy

Objective 28

Increase awareness of the importance of our Cornish Mining Heritage and our aim for World Heritage Status

PROJECTS

- Solar PV Panels Town Halls
- Climate Change
- Burra Mine Offices Remediation & AR Experience
- World Heritage Bid Burra
- Heritage Walking & Biking Track Burra
- Conservation Management Plan Projects Burra
- Cemetery Repairs Burra
- Unicorn Brewery Upgrade Burra
- Miners Dugouts AR Experience

Solar PV Town Halls

The community have expressed their concerns with climate change, energy efficiency and relevant costs and Council will continue to seek grant funding application for the installation of a solar photovoltaic system on a number of Town Hall Buildings throughout the region. The proposed locations include solar voltaic systems at Town Halls in the following locations: Farrell Flat, Hallett, Terowie, Booborowie, Burra and Eudunda with Burra & Farrell Flat earmarked first.

Council made an unsuccessful grant application in 2019 to fund this project and will continue to look at grant funding opportunities.



DEPARTMENT FOR ENVIRONMENT & WATER SOUTH AUSTRALIAN GOVERNMENT CLIMATE CHANGE ACTION PLAN 2021 – 2025 Resilient communities - Communities across South Australia are experiencing the impacts of a changing climate and are responding in a variety of ways. The government will continue to assist communities to reduce risk, adapt and build resilience.

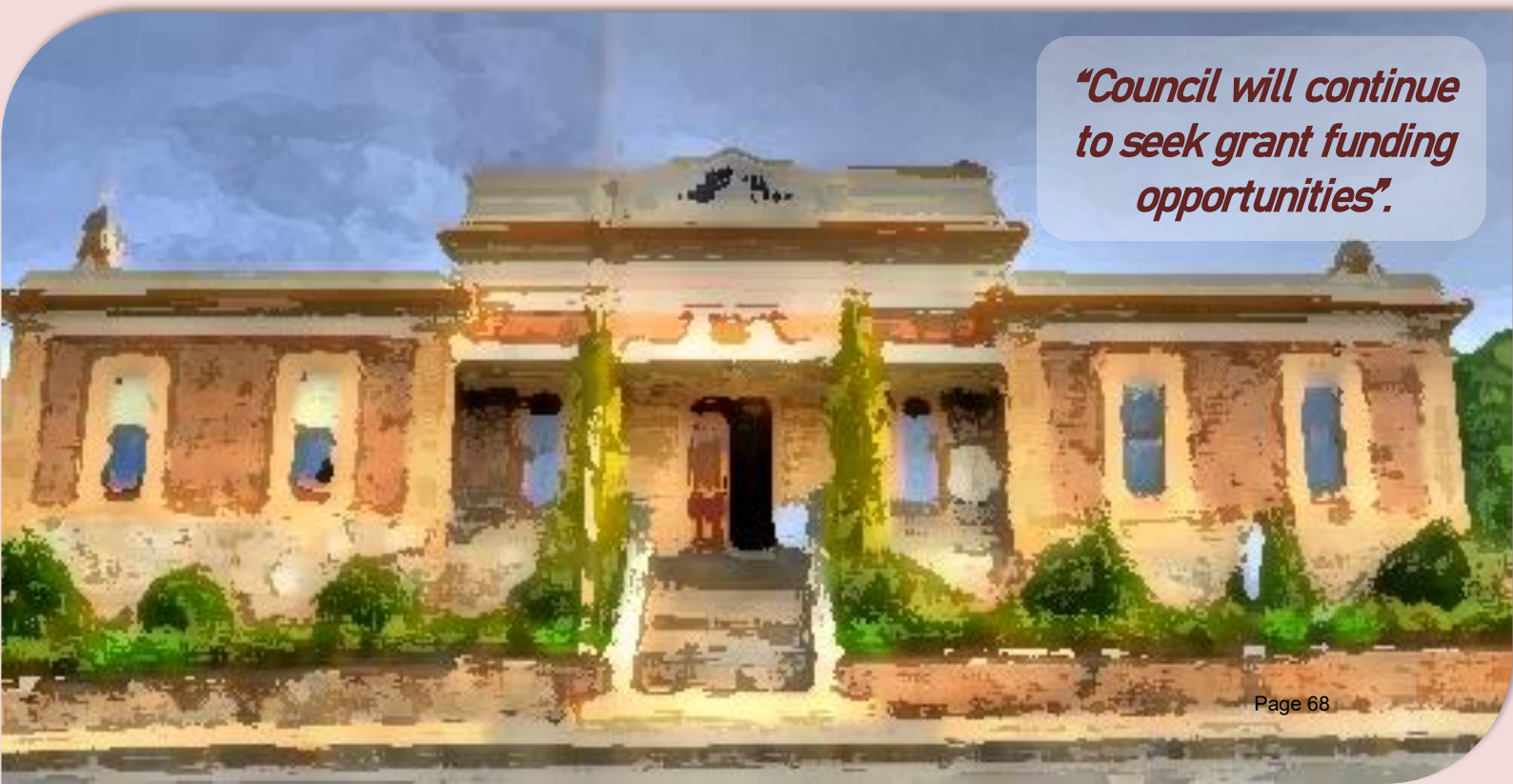


CLIMATE COUNCIL, CITIES POWER PARTNERSHIP PLEDGE
Renewable Energy 4 – Support community facilities to access renewable energy through incentives, support or grants.



ENVIRONMENT PROTECTION AUTHORITY SA STRATEGIC DIRECTIONS 2018 – 2022 Climate change: extreme weather events are becoming more frequent, placing greater emphasis on the need for adaptation and strong incident management

“Council will continue to seek grant funding opportunities”.



Climate Change

Council passed the following motion;

That Council supports an amended statement with the exclusion of;

Local Government acknowledges that human-induced climate change is occurring and that urgent, ambitious, and immediate action is required at all levels of government to address the climate crisis by reducing emissions; and adapting to the impacts that are unavoidable;

and that the complete Statement be amended to;

The LGA supports the State Government's ambition to achieve 50% reduction in emissions by 2030 and net zero emissions by 2050; supports its member councils to take the meaningful and immediate actions required; and calls for strong leadership and coordination of all levels of government for the ongoing, effective and adequately funded Commonwealth and State Government climate change policies and programs.

Premier's Climate Change Council

Council will continue to advocate on behalf and for community to identify and manage climate change impacts.

Implementation of the Climate Change Action Plan will deliver the Directions for a Climate Smart South Australia that was released in December 2019. By implementing the Plan the government is expecting to grow climate smart and low emissions industries, create new jobs and attract additional investment, particularly in regional areas.



GREEN INDUSTRIES SA SOUTH AUSTRALIA'S WASTE STRATEGY

2020 – 2025 Transitioning to a Circular Economy South

Australia's work towards a circular economy will build upon current policy initiatives and activities designed to reduce waste, improve material and energy efficiency, and reduce greenhouse gas emissions



LANDSCAPE BOARD SA 2020 – 2029 STRATEGIC PLAN

Healthy Environments - Maintain existing levels of ecosystem function in the mid north, Sustainable Use - Urban and industrial development is sustainable and operates within the needs and constraints of natural systems



ENVIRONMENT PROTECTION AUTHORITY SA STRATEGIC

DIRECTIONS 2018 – 2022 Climate change: extreme weather events are becoming more frequent, placing greater emphasis on the need for adaptation and strong incident management

"Supporting South Australians to adapt to Climate Change".

Burra Mine Office Remediation & AR Experience

Council successfully received \$250,000 in grant funding from the Commonwealth Government to cover the cost of this project.

The Mine Office and Residence located at the Burra Monster Mine, was constructed in 1849 comprising of the Director's boardroom, Captain's changing and consulting rooms, Accountant's office and drafting office. The grant funding covers immediate remediation works to stabilize the remaining structures of the offices at the Burra Mine site, under recommendation of the Australia Cornish Mining Sites: Burra Conservation Management Plan.

The second part of the funding covers 3D modelling to create a digital augmented reality experience to increase uptake from younger generations. This will create a new income source through admission fees and hire use that will support the ongoing management of the iconic heritage sites throughout Burra.

Remediation work commenced in 2021 with the project due for completion in June 2022.



**TOURISM SA SOUTH AUSTRALIAN VISITOR ECONOMY
SECTOR PLAN SA REGIONAL VISITOR STRATEGY**
Experience & Supply Development Regional
experience development priorities



**HERITAGE COUNCIL OF SA STRATEGIC PLAN TOWARDS
2025** Protect – balanced representation of historic
themes on SA Heritage Register, Promote – adaptive
and ongoing use made easier



**ENVIRONMENT & WATER SA GROWING OUR HERITAGE
FUTURE** Tourism activation conserving and enhancing
heritage places, sites and landscapes

***"The second part
of the funding
covers 3D
modelling to
create a digital
Augmented
Reality***

World Heritage Bid Burra

In August 2019, the Chief Executive Officer was asked to commence discussions with potential stakeholders to assist Council in a World Heritage application for the Australian Cornish Mining Sites: Burra.

In February 2020, Council engaged Mr Barry Gamble. In October 2020, Mr Gamble provided Council with an 'interim progress' document, a first draft statement of proposed Outstanding Universal Values and a final iteration was provided to Council in April 2020.

Mr Gamble has continued to keep the Cornwall Council informed and the Chair of the Cornish Mining Partnership (also head of Cornwall Council) both of whom are extremely supportive of Councils bid for World Heritage. Further work is required with a comprehensive dossier including a compelling argument for National Tentative Listing and ultimate World Heritage Listing.

Due to current restrictions regarding the COVID-19 pandemic, Mr Gamble has been unable to visit Burra to further the application process.



**INTERNATIONAL CULTURAL TOURISM CHARTER
MANAGING TOURISM AT PLACES OF HERITAGE
SIGNIFICANCE** To facilitate and encourage those involved this heritage conservation and management to make the significance of that heritage accessible to the host community and visitors



**TOURISM SA SOUTH AUSTRALIAN VISITOR
ECONOMY SECTOR PLAN SA REGIONAL VISITOR
STRATEGY** Experience & Supply Development
Regional experience development priorities
Regional Infrastructure priorities



**HERITAGE COUNCIL OF AUSTRALIA STRATEGIC
PLAN 2018 – 2021** Collaborate with the Department, communities, organisations, academic institutions, and all levels of government to identify opportunities to create new innovative partnerships and strengthen existing ones.



Heritage Walking & Biking Track

Burra

As part of the Commonwealth Governments Drought Funding initiative, \$100,000 was budgeted to extend, enhance and upgrade the existing bike track to connect Burra North & South.

The upgrade included the installation of multiple pedestrian crosses and creates a loop throughout the main township of Burra incorporating a number of its heritage listed buildings and sites.

The second stage of the project is to place historic and culturally significant signage and information at points of interest along the trail to educate and inform community and visitors to the region.

The complete 'loop' trail is due for completion in 2021 and consideration will be given to seating and shelters at a later date.



Government of South Australia

Department for Environment
and Water

DEPARTMENT FOR ENVIRONMENT & WATER SA HERITAGE TOURISM STRATEGY 2021

The South Australian Government is exploring how SA's Heritage, its places and stories can be reimagined to help grow the visitor economy.



AUSTRALIA ICOMOS 2017 – 2022 STRATEGIC PLAN

Value – Conservation – We value cultural heritage as an integral part of Australia's many stories as a resource to be preserved, cherished and celebrated by all Australians.



WALKING SA STRATEGIC PLAN 2017 – 2019 Support the development of infrastructure and services to support walking in urban areas, walking in the bush, regional locations and remote areas



Conservation Management Plan Projects

In accordance with the Australian Cornish Mining Sites: Burra Conservation Management Plan (ACMS: Burra CMP) Council endorsed a number of priorities in December 2020. Some of those priorities included the following;

1. To prepare a development plan to integrate objectives from the ACMS: Burra CMP.
2. Review and audit tourism strategies.
3. Prepare a reconciliation action plan and develop indigenous policies.
4. Develop a signage strategy for the Burra Historic Mine Site.

Further priorities are outline in the ACMS: Burra CMP Policy and ACMS: Burra CMP Town wide Policy.

Council received notification that the Australian Heritage Council endorsed the Australian Cornish Mining Sites: Burra Conservation Management Plan at their 24 November 2020 meeting. Council endorsed a number of priorities at the December 2020 ordinary Council Meeting. The ACMS: Burra CMP Policy and the ACMS: Burra CMP Town wide Policy were adopted in July 2021.



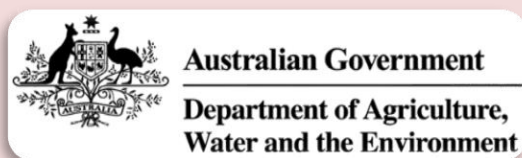
INTERNATIONAL CULTURAL TOURISM CHARTER MANAGING TOURISM AT PLACES OF HERITAGE

SIGNIFICANCE To facilitate and encourage those involved this heritage conservation and management to make the significance of that heritage accessible to the host community and visitors



HERITAGE COUNCIL OF AUSTRALIA STRATEGIC PLAN

2018 – 2021 Collaborate with the Department, communities, organisations, academic institutions, and all levels of government to identify opportunities to create new innovative partnerships and strengthen existing ones.



AUSTRALIAN GOVERNMENT DEPARTMENT OF AGRICULTURE, WATER AND THE ENVIRONMENT HERITAGE MANAGEMENT PRINCIPLES

Protect, conserve, present and transmit, to all generations, their National Heritage values.



Cemetery Repairs Burra

The Burra Cemetery (1850) (SAHR 10432) was established in its current location, on the eastern side of Burra Creek, in c.1849-1850.

Current scheduled works include the ongoing repair and maintenance to the stone boundary wall with approximately 15 – 20 metres repaired annually. Other works include conservation to significant headstones in the cemetery.



**HERITAGE COUNCIL OF SA STRATEGIC PLAN
TOWARDS 2025** Conserve - Adequate government
resources dedicated to promoting heritage
tourism, protection and conservation

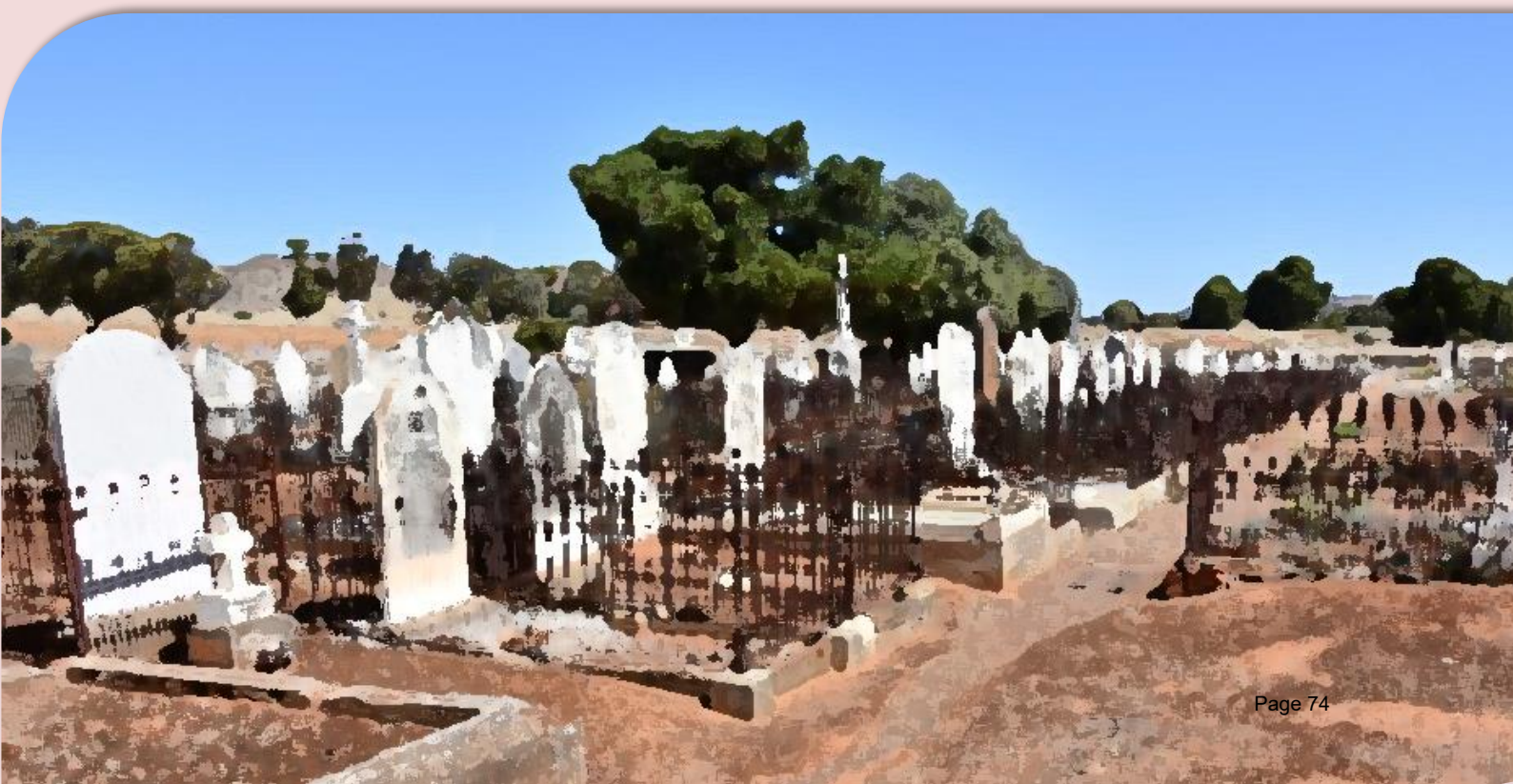


Australian Government
**Department of Agriculture,
Water and the Environment**

**AUSTRALIAN GOVERNMENT DEPARTMENT OF
AGRICULTURE, WATER AND THE ENVIRONMENT**
HERITAGE MANAGEMENT PRINCIPLES Protect,
conserve, present and transmit, to all generations,
their National Heritage values.



ICOMOS INTERNATIONAL TOURISM CHARTER
Tourism & conservation should benefit the host
community.

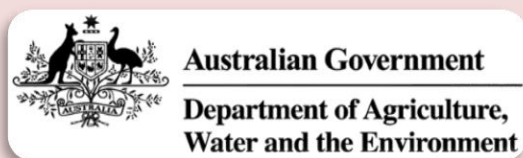


Unicorn Brewery Upgrade

A Conservation Management Plan and dilapidation report of the Unicorn Brewery Cellars was conducted by Architecture firm (Flightpath Architects) in 2020 to better understand remedial works required for this site. Contractors were engaged to commence work on the Unicorn Brewery Cellars facilitating remediation to ensure longevity of the asset.

The remediation included drainage plans and water seepage mitigation through controlling surface water, white ant removal, repointing stone work, installation of an access/egress ramp for compliance, replacing damaged stonework, repairing brick archways, removal of salt laden soil, re-establishing the closed cellar and alternate exit, refurbishing exit hut and step and reviewing emergency compliance. This work is due for completion in 2022.

Remediation is only the first small step of many steps of the eventual outcome, the end result aiming at enhancing its use and attractiveness to tourism, business and education sectors through touch, taste and smell.



AUSTRALIAN GOVERNMENT DEPARTMENT OF AGRICULTURE, WATER AND THE ENVIRONMENT HERITAGE MANAGEMENT PRINCIPLES Protect, conserve, present and transmit, to all generations, their National Heritage values.



HERITAGE COUNCIL OF SOUTH AUSTRALIA STRATEGIC PLAN TOWARDS 2025 Promote - Adaptive and ongoing use made easier, Access to traditional trade and skills for heritage conservation, well-funded heritage conservation and informed, empowered and energised owners of heritage places



TOURISM SA SOUTH AUSTRALIAN VISITOR ECONOMY SECTOR PLAN SA REGIONAL VISITOR STRATEGY Showcasing regional experience strengths, regional experience development priorities, event management, building event capability



Miners Dugouts & AR Experience

"Development of a World Heritage level tourism experience trail, both digital and actual of the Miners' Dugouts in the Burra Creek.

The unique features of the Miners' dugouts along the Burra Creek is a living reminder of the Cornish miners and their way of life. Nowhere else in the world did this occur and so many remnants and artefacts are still in place for us to glimpse into the past.

The late Russell Philip's put 30 years' work to map, section, number and categorise this history as well as painting evocative images of the surroundings with found objects of daily life included in his paintings.

With the generous support of paintings, copious notes and cataloguing the Burra History Group and Burra National Trust see this as an opportunity to create a window back in time for future generations to enjoy"

Burra History Group & Burra National Trust

The project will include the creation of a world-first interpretive trail, with geo-digital points to link Russell's paintings to create a virtual reality to immerse tourists in a long-gone world highlighting Burra's mining past for future generations. Council will collaborate with the Burra National Trust and Burra History Group.



AUSTRALIAN ICOMOS 2017 – 2022 STRATEGIC PLAN Engage with contemporary issues in cultural heritage



COUNTRY ARTS SA STRATEGIC PLAN 2021 – 2025 Support and empower artists, arts workers and organisations in regional South Australia to develop their practice, produce extraordinary arts experiences, and share their unique stories.



TOURISM SA SOUTH AUSTRALIAN VISITOR ECONOMY SECTOR PLAN SA REGIONAL VISITOR STRATEGY Experience & Supply Development
Regional experience development priorities
Regional Infrastructure priorities

***"An opportunity
back in time for
future
generations to
enjoy".***

COMMUNITY ASSETS & INFRASTRUCTURE

A planned and funded Infrastructure & Assets Management Program that supports the long-term financial sustainability of Council

GOYDER OBJECTIVE

Objective 29

Implement Council's Infrastructure and Asset Management Plan and keep the community informed

Objective 30

Continue to develop and implement the Stormwater Management Plans

Objective 31

In collaboration with the community identify core community assets to be retained, maintained, managed and improved for community use

PROJECTS

- Waste Transfer Stations
- Midnight Oil Wayside Stop
- Stormwater Management
- Community Leases & Licenses
- Community Assets - Buildings

Waste Transfer Stations

A need was identified in 2018 to find a solution to the increase of illegal dumping activities to provide residents an opportunity to maintain clean and tidy appearances of property and to provide the Goyder residents with the opportunity to recycle waste and reduce the volume of waste disposal through landfill.

Four transfer stations will be constructed in Terowie, Robertstown, Booborowie and Farrell flat.

Council has received development and environment protection authority approvals for the facilities in Terowie & Robertstown and construction is scheduled for 2022.

Council is currently working on construction design and approvals for Booborowie & Farrell Flat.



Government of South Australia

Department for Environment
and Water



InfrastructureSA



Regional
Development
Australia

SA GOVERNMENT CLIMATE CHANGE ACTION PLAN

2021 – 2025 Resilient communities - Communities across South Australia are experiencing the impacts of a changing climate and are responding in a variety of ways. The government will continue to assist communities to reduce risk, adapt and build resilience.

INFRASTRUCTURE SA 20 YEAR STATE INFRASTRUCTURE STRATEGY

Optimise current assets before building new

REGIONAL DEVELOPMENT AUSTRALIA REGIONAL DEVELOPMENT STRATEGY

Regional Services – identify regional service gaps and put in place services for community safety, wellbeing and liveability



Midnight Oil Wayside Stop

In 2020 Council committed \$52,800 from the Commonwealth Government's Drought Communities Programme to develop a stopping area (wayside stop) for visitors to safely stop to photograph and admire the iconic 'Midnight Oil' house. This project was completed in 2021.

The second stage of this project is to incorporate signage that informs visitors of its iconic status including Ngadjuri heritage, early settlement, Cobb & Co, Mawson Trail and Midnight Oil. Consideration will be given to a shelter at a later date.

At a later date, Council will investigate the opportunity to include this site as part of a walking trail linking Burra to Mt Bryan.



RECONCILIATION AUSTRALIA STRATEGIC PLAN 2017 – 2022 Unity – an Australian society that values and recognises Aboriginal and Torres Strait Islander cultures & history as a proud part of a shared national history



TOURISM SA SOUTH AUSTRALIAN ECONOMY SECTOR PLAN SA REGIONAL VISITOR STRATEGY Regional Marketing Priorities – Showcasing regional experience strengths



HISTORY TRUST OF SA GIVING THE PAST A FUTURE STRATEGIC PLAN 2018 – 2022 Where have we come from and where are we going? We inspire curiosity and interest about South Australia's diverse histories for visitors and locals alike.

“Visiting, stopping and taking photographs of this iconic house is now safe for all”.



Stormwater Management

Burra, Farrell Flat and Eudunda have historically had localised flooding issues from storm events causing extensive damage to public and private infrastructure. Council developed the Stormwater Management Plan for the township of Burra to ensure future flood proofing to mitigate damage and disruptions caused by storm and flooding events. The Plan incorporates outcomes and recommendations into a design and construct phase. Council will prioritise the actions highlighted within the plan and investigate funding and construction over a five – ten year period.

Several stormwater projects have already been completed within the township of Eudunda to mitigate the impact of storm/flood events however; all these works have been completed on a more localised level and the broader catchment area has never been assessed. Council will investigate the possibility of funding a Stormwater Management Plan in collaboration with the Stormwater Management Authority for Eudunda.

Other townships that may require stormwater management include Terowie & Booborowie and Council will investigate whether these townships would benefit from the development of a Stormwater Management Plan over the coming years.



STATE PUBLIC HEALTH PLAN 2019 – 2024 Promote –
Build stronger communities and healthier environments



SA ENVIRONMENT PROTECTION AUTHORITY STRATEGIC DIRECTIONS 2018 – 2022 Climate change: extreme weather events are becoming more frequent, placing greater emphasis on the need for adaptation and strong incident management & Legacy contamination: dealing with contamination from past activities requires strong systems, science and community engagement.



SA CLIMATE CHANGE ACTION PLAN 2021 – 2021 Resilient communities - Communities across South Australia are experiencing the impacts of a changing climate and are responding in a variety of ways. The government will continue to assist communities to reduce risk, adapt and build resilience.



Community Leases & Licenses

Council has a large number of community licences and leases that are due to expire or have already expired. There are quite a number of inconsistencies in varying forms and Council would like to develop a master document to ensure uniformity in all future leasing and licencing arrangements. Uniformity includes a master document and policy that establishes the terms and conditions which will form the basis of negotiations to maximise community benefit arising from the use of Council Property and ensure responsible management whilst minimising the risk to Council.

Council will use a transparent and consistent approach with the relevant lessees ensuring that Council property is maintained and occupied responsibly, having the best regard to the Goyder community.

Council has been meeting to discuss leasing/licensing arrangements with the relevant community bodies throughout 2020 – 2021.



CHILDREN & YOUNG PEOPLE FRONT & CENTRE STRATEGIC PLAN 2018 – 2022 Develop more ways to participate in community life, including places to hand out, affordable sport and recreational activities



INCLUSIVE SA STATE DISABILITY INCLUSION PLAN 2019 – 2023 Involvement in the community, engagement & consultation, access to services.



OFFICE FOR RECREATION, SPORT & RACING STRATEGIC PLAN 2021 – 2025 Strategic Partnerships – community outcomes are delivered through strategic partnerships

“Council property is occupied responsibly whilst having the best regard to Goyder community”.

Community Assets – Buildings

NEW 2021

Council has commenced a condition assessment of all Councils buildings utilising Councils Asset Management Software. This will enable to Council to strategically manage capital and maintenance works across the region and provide long-term management plans for each building.

This will include all Council owned buildings such as halls, sporting facilities and pools.

It is anticipated that the condition assessment will take approximately twelve months to complete.



INCLUSIVE SA STATE DISABILITY INCLUSION PLAN 2019 – 2023
Involvement in the community, engagement & consultation, access to services.



INFRASTRUCTURE SA 20 YEAR STATE INFRASTRUCTURE STRATEGY
Optimise current assets before building new



HERITAGE COUNCIL OF SA STRATEGIC PLAN TOWARDS 2025 Promote – adaptive and ongoing use made easier, Conserve – elevated prominence of heritage for the community, businesses and visitors



LEADING THE WAY

*Strong leadership through a
cohesive, effective team.*

GOYDER OBJECTIVE

Objective 36

Manage human resources effectively so that staff and Elected Members have the skills, attitudes and knowledge they need to provide consistent, high quality services to fulfil their roles

Objective 39

Utilise the Legatus Group to advocate on behalf of Council and the region for legislative change on matters of common interest

PROJECTS

- Conversations with the Chief
- Cultural Awareness Training
- Music Heritage Centre

Conversations with the Chief

"Conversations With The Chief – Your Workplace, Its Culture and You" workshops were created directly as a result of an internal employee review where a number of critical cultural deficiencies were discovered.

To ensure the information was disseminated across the whole organisation, staff were invited to participate in one of five small group workshops. These 3 hour sessions ran between 27 April and 6 July 2021.

To challenge thinking about workplace culture, a series of questions were posed around workplace culture and work/life balance.

In the last part of the workshop, focus was on Cultural Reset, touching on Communication, Language, Listening, Tone, Honesty, Equality, Respect, Open-mindedness, Diversity – opinions, Mental wellbeing and going to the source.

Conversations with the Chief were delayed due to the COVID19 Pandemic but are set to continue in 2022.



Local Government Association
of South Australia

**LOCAL GOVERNMENT ASSOCIATION OF
SOUTH AUSTRALIA STRATEGIC PLAN 2021 –
2025** Facilitate continuous improvement in
Local Government



Government of South Australia
SA Mental Health Commission

**SA MENTAL HEALTH COMMISSION STRATEGIC
PLAN 2017 – 2022** education and early
intervention for people and communities
to strengthen mental health and
wellbeing, prevent illness, raise awareness
and reduce stigma



**RECONCILIATION AUSTRALIA STRATEGIC
PLAN 2017 – 2022** Race Relations – All
Australians understand and value
Aboriginal and Torres Strait Islander and
non-Indigenous cultures, rights and
experiences, which results in stronger
relationships based on trust and respect
and that are free of racism.



Cultural Awareness Training

With the assistance of the Arts & Cultural Facilitator Council will implement Cultural Awareness sessions, to sustain better reconciliation toward cultural views and historic understandings. All Council staff and the wider community can benefit.

Sessions will be delivered by qualified Ngadjuri persons.



Government of South Australia

Department of the Premier
and Cabinet

**SA DEPARTMENT OF PREMIER & CABINET ABORIGINAL
ACTIONS PLAN 2021 – 2022** Improving the quality and
delivery of services to Aboriginal South Australians



**RECONCILIATION AUSTRALIA STRATEGIC PLAN 2017 –
2022** Unity - An Australian society that values and
recognises Aboriginal and Torres Strait Islander cultures
and heritage as a proud part of a shared national
identity



**INDIGENOUS AUSTRALIANS AGENCY 2020 – 2021
CORPORATE PLAN** Working with Indigenous Australians,
their communities and leadership in genuine partnership
to design and deliver policies and programs that are
responsive to local or regional context and needs



Cultural & Events Centre

A unique collaboration with the Commonwealth, South Australian Government and Council to deliver a stunning addition to the region that provides a venue for use as a studio, exhibition and performance space complementing its historic setting. The flexibility of this venue will see an exciting time in Burra through the attraction of the festival, corporate and international markets to the wider Goyder region. The construction of Cultural Centre will expose the region to new market that will aim to significantly increase the tourism levels. Council will continue to seek funding opportunities for this exciting project.

The Burra Music Heritage Centre will be an inclusive place that is used for cultural activities, arts programs and performances. Providing a beautiful venue with a strong focus on inclusivity and accessibility to groups and individuals. New employment opportunities will be created collaborating with local businesses and community groups to create a high value visitor experience. A community asset strategically managed to ensure long term sustainable use and preservation, while promoting the natural heritage of Burra. The historical aspect will be unlike any other across Australia, which is why Council has responded to its unique selling point through the commitment of funds to its development.

In February 2022 Council will be submitting an application to the Building Better Regions Fund Round 6.



Government of South Australia
Department for Innovation and Skills

INNOVATION & SKILLS SA 2021 – 2022 MUSIC DEVELOPMENT OFFICE STRATEGIC PLAN Rebuild –

Champion the South Australian Music Sector with a focus on local collaborations and advocacy, with the view to support innovative export pathways in existing and unexpected markets.



TOURISM SA SOUTH AUSTRALIA VISITOR ECONOMY SECTOR PLAN SA REGIONAL VISITOR STRATEGY Industry capability – resilience, digital, event management, business management & customer service



REGIONAL DEVELOPMENT AUSTRALIA REGIONAL DEVELOPMENT STRATEGY Regional Investment – focus on initiatives that result in increased trade, productivity, profitability, sustainability and growth



COMPLETED PROJECTS

2021 – 2022

Booborowie Andrews Road Floodway	\$424k
Booborowie Hall Kitchen Upgrade	\$44k
Booborowie Shade Sail	\$k
Burra Creek Bore Power Upgrades	\$18k
Burra Footpath Repaving	\$168k
Burra Golf Club Irrigation Infrastructure	\$28k
Burra Heritage Walking & Biking Track	\$120k
Burra Morphet's Engine House Public Convenience Upgrades	\$17k
Burra Paxton Square Cottages Bathroom Upgrades	\$83k
Burra Paxton Square Cottages Kitchen Upgrades	\$115k
Burra Pedestrian Crossing Morehead & West Street	\$54k
Burra Stone Entrance Wall	\$10k
Eudunda Dog Park Construction	\$11k
Eudunda Mosey Road Floodway	\$84k
Eudunda Nicholson Reserve Shelter & Park Furniture	\$24k
Eudunda Oval Fencing	\$10k
Eudunda Oval Irrigation Tank	\$110k
Eudunda Oval Public Conveniences	\$50k
Eudunda Sports Blind Sports Club	\$8k
Eudunda Street Bin Replacement	\$9k
Eudunda Ward & Weigall Streets Walking Trail & Planting	\$10k
Farrell Flat Hall Solar Panels	\$6k
Hallett Cemetery Niche Wall	\$18k
Hallett Pool Shade Sail	\$6k
Hampden Rail Corridor Infill	\$292k
Point Pass Oval Changerooms Upgrades	\$6k
Re-sheeted Roads	\$1.912m
Robertstown Oval Playground Fencing	\$18k
Robertstown Septic & Public Convenience Upgrades	\$96k
Worlds End Public Conveniences	\$18k

UPCOMING PROJECTS

ASSET MANAGEMENT

PLAN 2022 – 2023

BUILDINGS & ASSOCIATED INFRASTRUCTURE

Cemeteries	\$70k
Pools	\$30k
Waste Transfer Stations	18k
Burra Caravan Park Refurbishment	\$25k
Paxton Square Refurbishment	\$25k
Passport Products Sites Refurbishment	\$40k
Reserves & Park Furniture	\$15k
Inspiration Point Shelter	\$30k
Robertstown Oval Upgrades	\$30k
Robertstown Irrigation	\$55k
Eudunda Oval reseal	\$40k
Burra Creek Power Xmas Lights	\$3k
Burra Jubilee Fountain Restoration	\$20k
Eudunda to Hampden Trail	\$100k
Eudunda Skate Park	\$523k
Burra Activity Centre Painting	\$13k
Burra Tennis Club Building	\$20k
Burra Town Hall Wall Repairs	\$6k
BGVIC verandah upgrade	\$100k
Eudunda Community Hub	\$20k
Eudunda Heritage Gallery	\$120k
Eudunda Show Hall Roof	\$30k
Hallett Hall & surrounds	\$125k
Robertstown Telecentre	\$30k
Tree Trimming	\$50k
Waste Management Strategy	\$15k
CWMS	\$36k

SEALED ROADS

General Maintenance	\$72k
North Booborowie Rd	\$1.68m
Hills Rd Reconstruction	\$300k
1.3km Hallett Township Rds	\$250k
Morehead St Burra Shoulder	
Reconstruction	\$50k

UNSEALED ROADS

Patrol grading & maintenance	\$575k
124km of Re-sheeting	\$2.4m

TRANSPORT INFRASTRUCTURE

Drainage	\$540k
Floodways	\$80k
Footpaths	\$115k
Kerbing	\$550k
Footpaths/Kerbing	
/Caravan/Parking	\$75k
National Heavy Vehicle	
Regulation upgrades	\$150k
Heritage Passport Signage	\$172k

PLANT & EQUIPMENT

Dual Cab / Utility	\$485
Waste Compactor	\$250k
Prime Mover	\$275
Rock Breaker	\$65k
Road Broom	\$12k
Minor Plant	\$15k

ADVOCACY

The Regional Council of Goyder Master Plan provides an engagement tool with community for both the short and long-term creating an opportunity for Community and a commitment from Council on issues that matter.

Advocacy campaigns and actions, are built from the issues and foundation of the Goyder Master Plan which provide themes and priorities for how Council directs its resources and uses its voice on behalf of residents.

Advocacy focuses on what needs to be done to influence external parties that have an authority or significant influence on whether Council can deliver on its plans and strategies to meet the needs and aspirations of our community.

Council recognises that when addressing advocacy issues, it will optimise success by working in collaboration with other organisations with similar aims. As such, to advocate and address advocacy issues of shared concern, Council will situate itself where possible, in key partnerships with an alliance approach with appropriate organisations and bodies.

Where we can advocate:

AGE FRIENDLY

The Goyder population is increasing in age and Council recognises the important role older residents play within their community. Being a central part of our community, we want to ensure that these residents continue to be participants in the workforce, as volunteers, or carers and are included as active, healthy and social participants within our community.

BIG DATA

Big data is the term that describes the large volume of data – both structured and unstructured that can be analysed for insights that lead to better decisions and strategic moves.

It has the potential to create large-scale social and economic benefits for Australians in a way that local government both deliver services and interact with residents. By implementing big data platforms government are provided with information in real time and can pinpoint areas that need attention.

Council now has an opportunity to use big data insights in a variety of innovative ways delivering impressive results for our community.



With many government agencies striving for greater digital transformation, we can expect big data initiatives to play an increasingly central role in our efforts to modernize community services. Technology is evolving to provide advanced solutions to support data backup, recovery and archiving requirements. Greater visibility into organisational information allows Council to enhance employee efficiency and productivity and provide the information needed for transparency and collaboration.

BROADBAND TV & MOBILE TELEPHONE ACCESS

Almost half of regional Australians report very poor or inadequate access to internet, television and mobile telephone coverage with farmers reporting the worst connectivity of all regional Australians.

It is generally considered that areas with poor access to internet also have poor economic conditions within their community. Health being of particular concern Council recognises that this issue requires consideration. As high-speed affordable broadband connectivity has become essential to modern society and healthcare provision becomes further technologically based there is a very real risk that regional Australia will be left behind.

BUSINESS

Council recognises the value and significance small business owners and operators have in creating local employment, providing essential goods and services, and helping both the local and regional economy to achieve growth and prosperity. Council continues to look at ways to build stronger and more productive relationships between business and Council.

CHILD CARE

There is a limited provision of formal childcare in the Goyder region and this is delivered through the Burra Early Centre and Burra OSHC.

New families moving to the Goyder region must consider childcare outside of the region due to limited options particularly in the Southern end of Goyder.

Those in the industry need to operate in a system that has clear and sustainable business arrangements, including regulation, planning, and funding. The 2016 Census identified that there were a total of 1082 families in the region with 414 of those with children under 15 years of age. Council will continue to investigate the needs of families in the region and advocate on behalf of the community for better access to childcare services.

EDUCATION

Council is aware of a needed focus on the unique challenges and opportunities regional communities encounter, they continue to be a strong advocate for its residents, whether it involves lobbying a State or Federal Government. While educational disadvantage is a problem in most educational systems across the globe, it is especially so in rural and regional Australia.



Council established the Goyder Education Foundation with the aim of improving education access to Goyder residents and regional South Australia. The inaugural meeting was held on 2 March 2020.

Council is aware of the shortage of teachers in rural schools but agrees that all students, regardless of where they live or attend school should have equal opportunities to develop their talents and interests and enjoy supportive relationships with their teachers and students.

EMERGENCY SERVICES

Council is a strong advocate for the provision of appropriate emergency services throughout the region. Continuing to build positive external relationships with providers and strong lasting internal relationships with community, staff, and volunteers to ensure healthy, productive, and needed services are available for community.

Council will use existing networks and build on new networks to ensure the right services are maintained for our Community.

Strong relationships within the community, between service providers and with key stakeholders such as police or ambulance services as well as positive relationships among Council, staff and volunteers within a productive team are key enablers. Council is aware of funding limitations and a shortage of resources but continues to work with external agencies to overcome these difficulties.

FAMILIES

Households with children require different services and facilities than other household types, and their needs change as both adults and children age.

To sustain the population of the community Council must advocate for those elements such as housing, transport, education, sport and recreation, health services, and employment that make Goyder an attractive place to live, play and work, with the aim to reduce family migration to metropolitan areas.

HEALTH & DISABILITY

The health and wellbeing of the Goyder community has always been a high priority of Council which is reflected within the Goyder Master Plan and within the Northern Group of Councils Regional Public Health Plan 2021-2026.

The NDIS in Goyder is a much-needed fundamental reform to the delivery of disability care that will change the lives of people with a disability. The Scheme's model of customer-directed purchasing of care supports (built in combination as a package funded through the NDIS) is being progressively implemented in South Australia.



Mental health across the Mid North has been identified as one of the most significant health priority issues especially relating to access to mental health services for communities across all population groups, as identified in the Mid North 10 Year Local Health Service Plan.

INCLUSIVITY

Councils provisional Disability Access & Inclusion Plan 2020 – 2024 was created in response to community consultation and focuses on priority issues where Council can advocate and be in a position of influence.

The Plan is a whole-of-Council approach focused on building a community that is accessible and inclusive to people of all-abilities. A community where all people can feel welcomed, supported and connected, and which values the diverse needs of its community members.

RATING EQUITY

Since 2019 Council has been raising concerns with the State Government regarding the growing inequitable situation arising from renewable energy developments in Goyder.

Additional costs to the operations of Council are coming in the form of infrastructure management and in particular our road network. This additional cost burden is currently and unfairly being funded by all Council ratepayers without a contribution by the renewable energy project developers.

Renewable energy project developers are coming to our Council area due to the exceptionally good wind and solar resources coupled with access to land and the soon to be completed interconnector providing exportability of energy to the eastern states. We welcome the economic development that comes with these developments, local traders and the economy are beneficiaries during construction.

We continue to advocate for a methodology of rating renewable energy projects and other developments in an equitable and transparent manner not dissimilar to methods adopted in other States.

It is Councils strong belief that if an equitable rating system was adopted across South Australia this would add an additional layer of revenue helping to ameliorate the necessity for rate rises burdening communities that already have significant other challenges such as drought, fire and COVID-19.



REGIONAL TRANSPORT PLAN

Council reported on the South Australian Public Transport Authorities intention to undertake a review of existing regional bus services.

As a key stakeholder, Council was asked to provide input regarding the movement of people within our communities.

Council provided a submission including the following KEY points;

- The Council area is 6,681km² with the topography and travel distances having an effect on our ever increased ageing population. The reality is that living in the Regional Council of Goyder means that you need to be a car owner and have the physical ability to drive.
- Transport infrastructure underpins the liveability of a town and Council supports the view that public transport for regional Australians is vital. Without it we continue to limit the opportunities of our community members and their ability to access employment, education, professional development, health services and recreation facilities.
- The social impacts of limited or no public transport have negative repercussions in terms of community wellbeing, social engagement and health. With an ever increasing ageing population Council is cognisant that public transport and/or supported services for our region is critical. Many people have to travel to Adelaide for services not the least is health for an ageing population. We also must ensure those who are unemployed, elderly, and disabled or at risk of social isolation need to be catered for.

Council urged the government to listen to regional communities to understand their unique needs in planning for and implementing public transport systems and strategies.

In addition to the above, in 2022 Council has asked YP Coaches to consider additional services in the region.

YOUTH

Council aims to foster youth participation and empowerment by involving young people in the life of their local community. Council values the importance for young people to be actively involved in decision making, council activities and regional community development to ensure the sustainability of our communities.

The Goyder Youth Advisory Committee (YAC) aims to develop the capacity of young people, to provide opportunities for youth activities and events, and to celebrate young people as valued members of the community. Council supports Goyder YAC, local schools and training organisations to develop and support emerging and future community leaders.

